

Beste Darstellung der Ansichten und  
Schnitte im 2-seitigen Lesemodus!



## Detailkatalog System 7400 Glasakustikwand

## 1 Übersicht der Bauformen

### 1.1 Stichwand

Absorber horizontal

1.1.1 Stichwand kurz

1.1.2 Stichwand lang

### 1.2 Wand in L-Form

Absorber horizontal

1.2.1 Wand in L-Form kurz

1.2.2 Wand in L-Form lang

### 1.3 Wand in T-Form

Absorber horizontal / Absorber Flurseite einteilig

1.3.1 Wand in T-Form kurz

1.3.2 Wand in T-Form lang

### 1.4 Wand in T-Form

Absorber horizontal / Absorber Flurseite zweiteilig

1.4.1 Wand in T-Form kurz

1.4.2 Wand in T-Form lang

### 1.5 Wand in T-Form

Absorber am Arbeitsplatz vertikal / Absorber Flurseite horizontal zweiteilig

1.5.1 Wand in T-Form kurz

1.5.2 Wand in T-Form lang

### 1.6 Wand in T-Form

Absorber vertikal

1.6.1 Wand T-Form lang

1.6.2 Wand in T-Form lang mit Mittelwand

## 2 Systemdetails System 3400

### 2.1 Achsrasterfuge

### 2.2 Wandanschluss mit 3400er Profil 50 mm

### 2.3 Wandanschluss mit LT32 mm Profil

### 2.4 T-Anschluss als Systemanschluss mit Klebeband

### 2.5 T-Anschluss als Systemanschluss mit Glasstoßprofil

### 2.6 Ganzglasecke 90° mit Klebeband

## 3 System 7400 alternative Glasdicken bei gleicher Absorbersdicke

### 3.1 Glas 10 mm

### 3.2 Glas 12 mm

### 3.3 Glas 16mm

## 4 System 7400 alternative Absorberdicke bei gleicher Glasdicke

### 4.1 Absorber 53 mm

### 4.2 Absorber 83 mm

### 4.3 Absorber 103 mm

**1.1 Stichwand**  
**Absorber horizontal**

- 1.1.1 Stichwand kurz
- 1.1.2 Stichwand lang

<b>Typ</b>	1.1.1 Stichwand kurz	1.1.2 Stichwand lang

**1.2 Wand in L-Form**  
**Absorber horizontal**

- 1.2.1 Wand in L-Form kurz
- 1.2.2 Wand in L-Form lang

<b>Typ</b>	1.2.1 Wand L-Form kurz	1.2.2 Wand L-Form lang

**1.3 Wand in T-Form**  
**Absorber horizontal / Absorber Flurseite durchgehend**

1.3.1 Wand in T-Form kurz

1.3.2 Wand in T-Form lang

<p><b>Typ</b></p>	<p>1.3.1 Wand in T-Form kurz</p>	<p>1.3.2 Wand in T-Form lang</p>

**1.4 Wand in T-Form**  
**Absorber horizontal / Absorber Flurseite geteilt**

1.4.1 Wand in T-Form kurz

1.4.2 Wand in T-Form lang

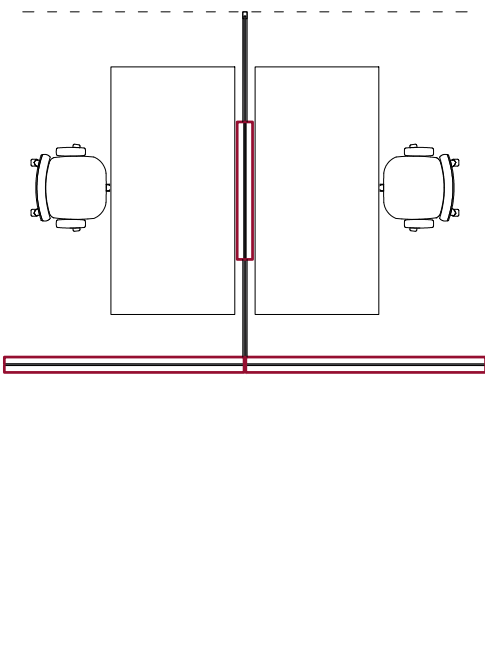
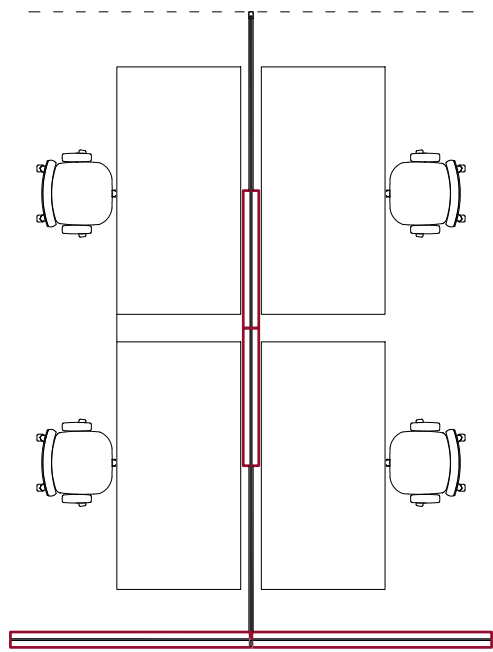
<p><b>Typ</b></p>	<p>1.4.1 Wand in T-Form kurz</p>	<p>1.4.2 Wand in T-Form lang</p>

1.5 Wand in T-Form

Absorber am Arbeitsplatz vertikal / Absorber Flurseite horizontal geteilt

1.5.1 Wand in T-Form kurz

1.5.2 Wand in T-Form lang

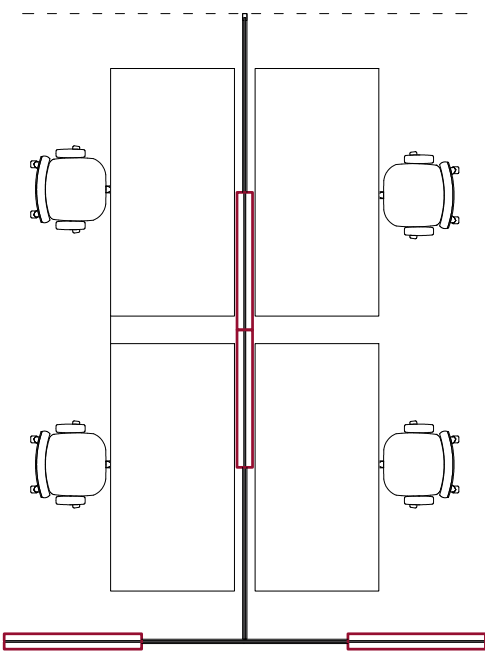
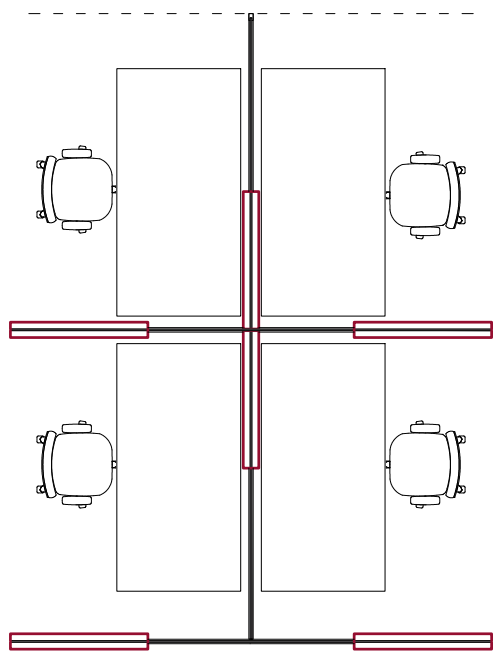
	<p>1.5.1 Wand T-Form kurz</p>		<p>1.5.2 Wand T-Form lang</p>
<p><b>Typ</b></p>			

1.6 Wand in T-Form

Absorber vertikal

1.6.1 Wand in T-Form lang

1.6.2 Wand in T-Form lang mit Mittelwand

	<p>1.6.1 Wand T-Form lang</p>		<p>1.6.2 Wand T-Form lang mit Mittelwand</p>
<p><b>Typ</b></p>			

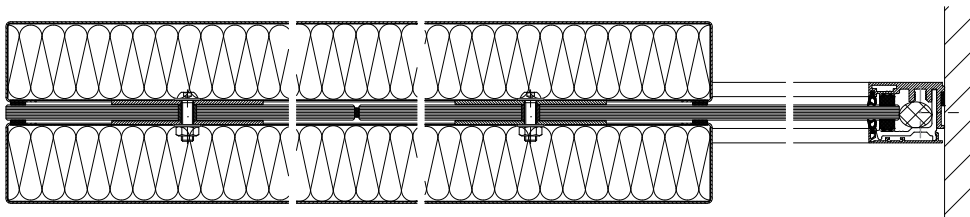
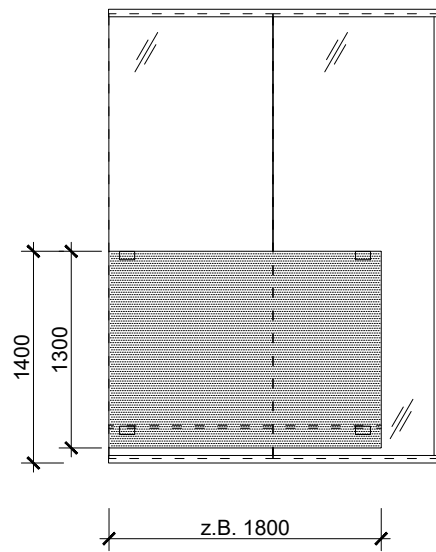
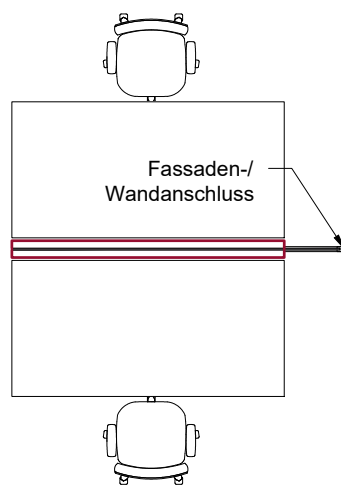


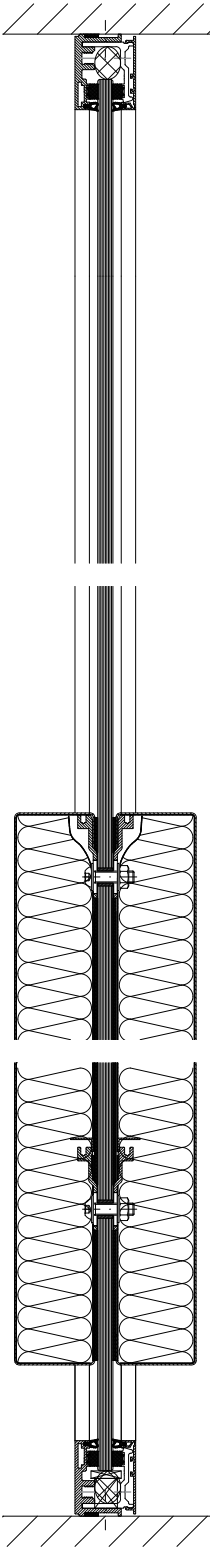
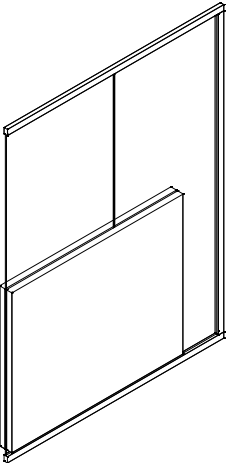
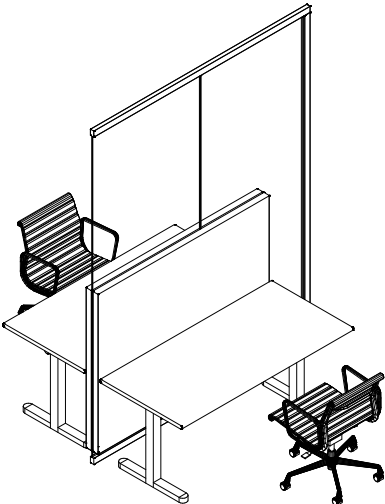
## 1.1 Stichwand Absorber horizontal

### 1.1.1 Stichwand kurz

Ansicht und Draufsicht M 1:50

Horizontal- und Vertikalschnitt M 1:5





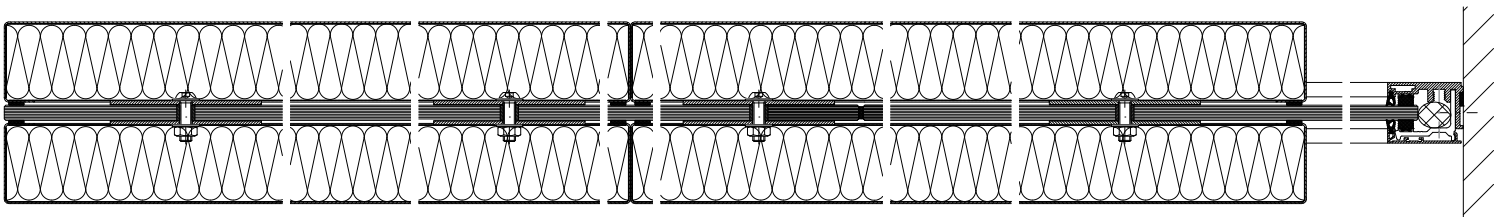
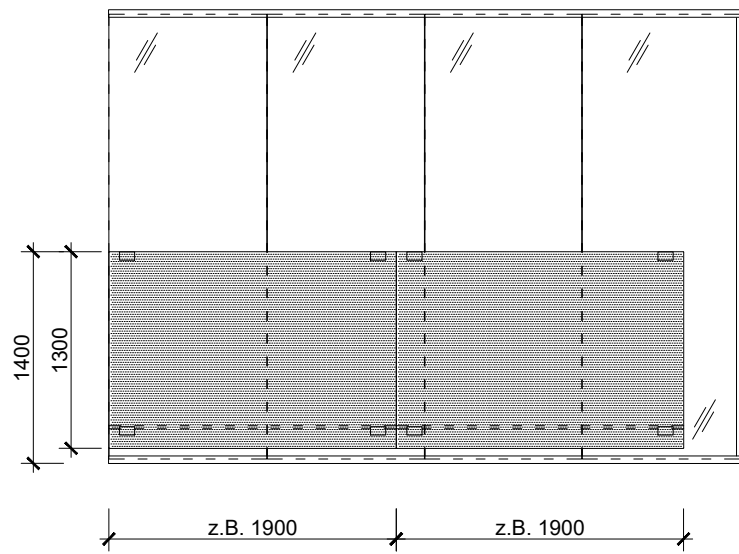
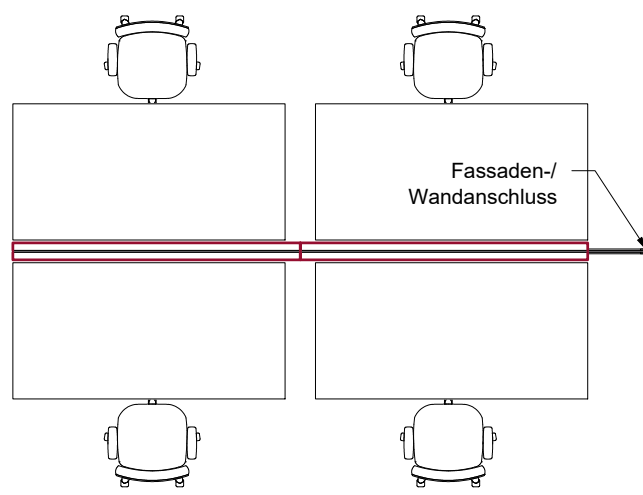


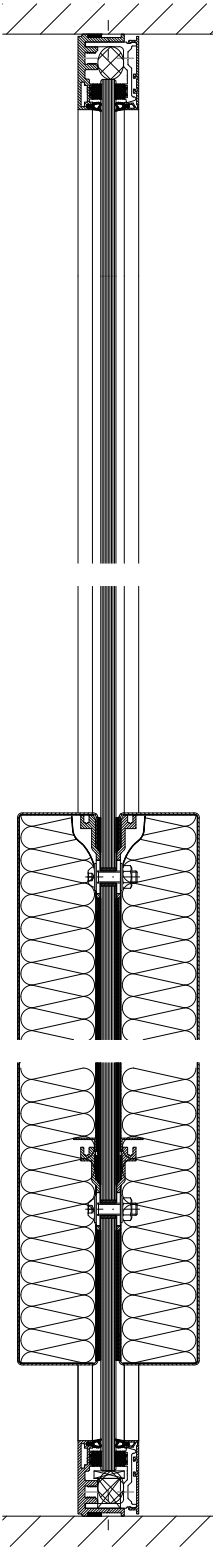
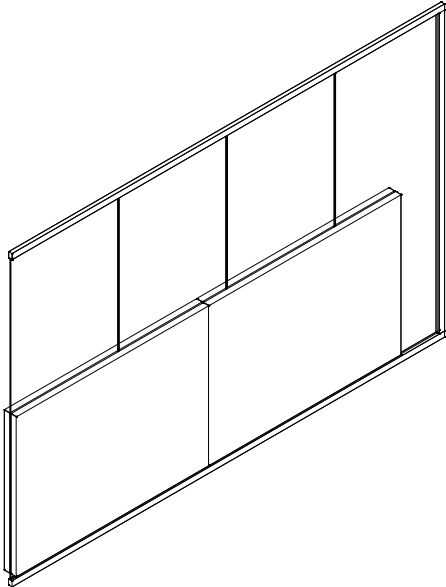
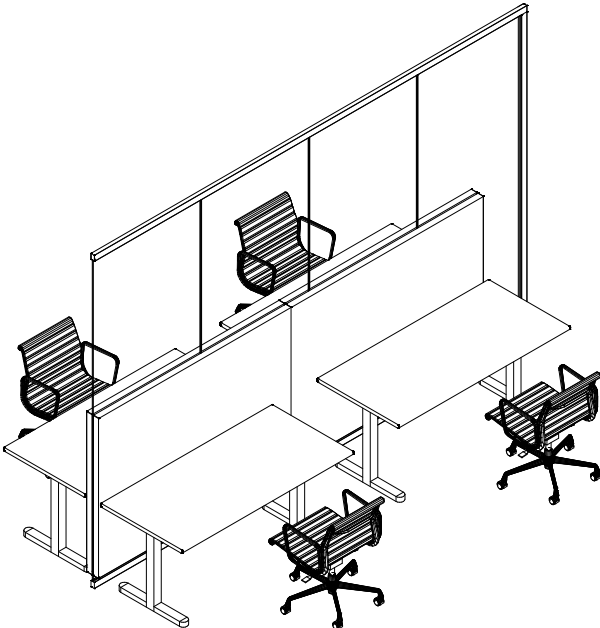
## 1.2 Stichwand Absorber horizontal

### 1.1.2 Stichwand lang

Ansicht und Draufsicht M 1:50

Horizontal- und Vertikalschnitt M 1:5



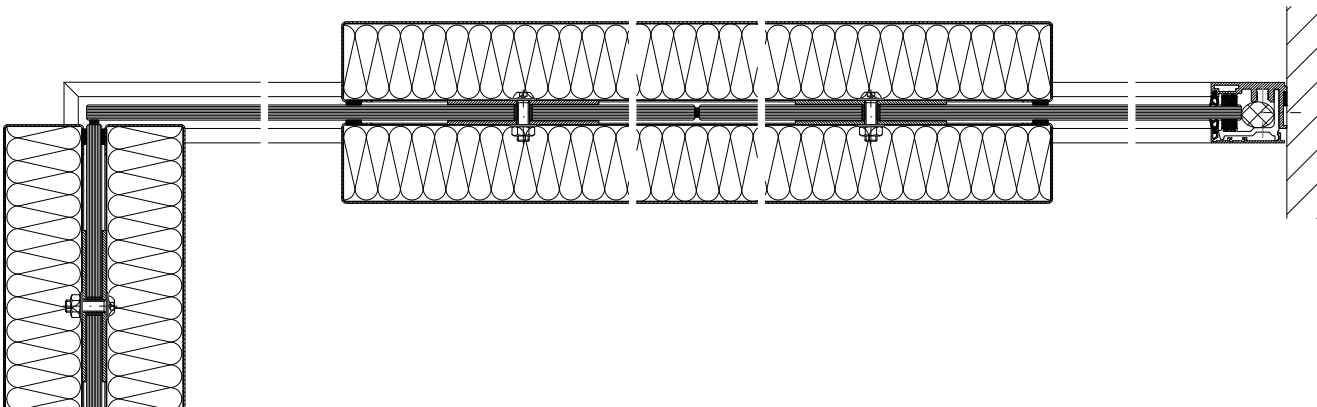
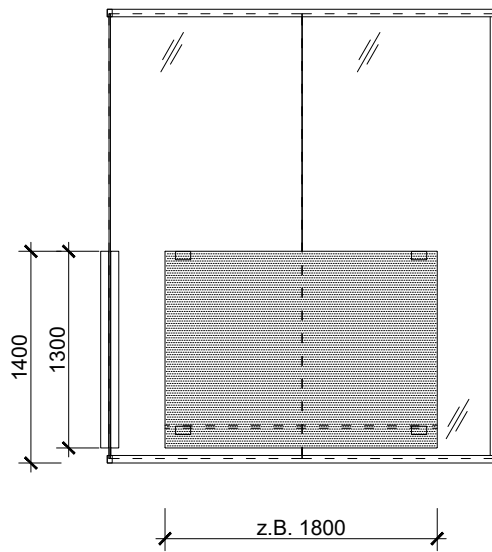
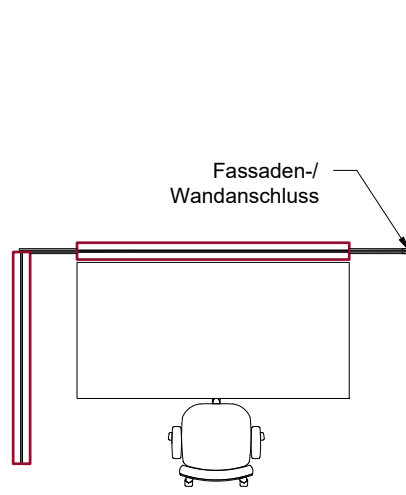


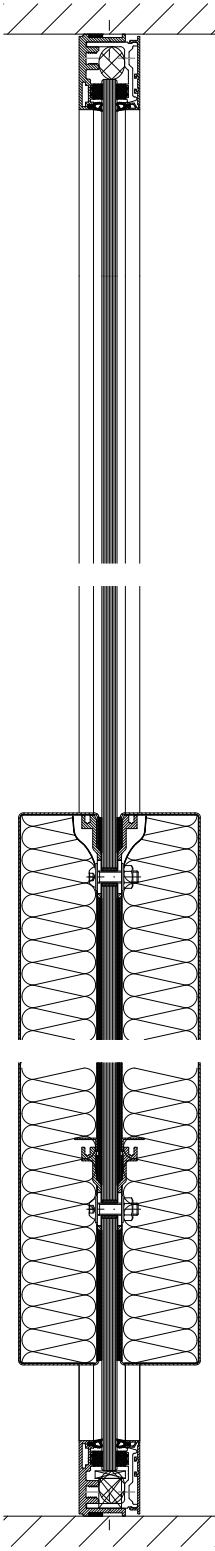
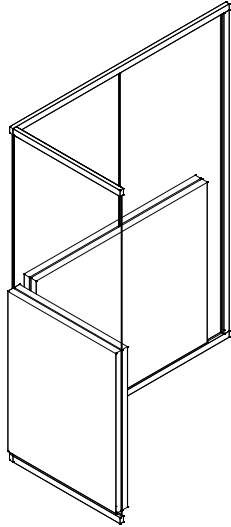
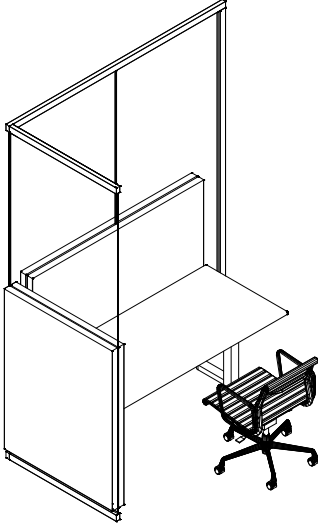
## 1.2 Wand in L-Form Absorber horizontal

### 1.2.1 Wand in L-Form kurz

Ansicht und Draufsicht M 1:50

Horizontal- und Vertikalschnitt M 1:5



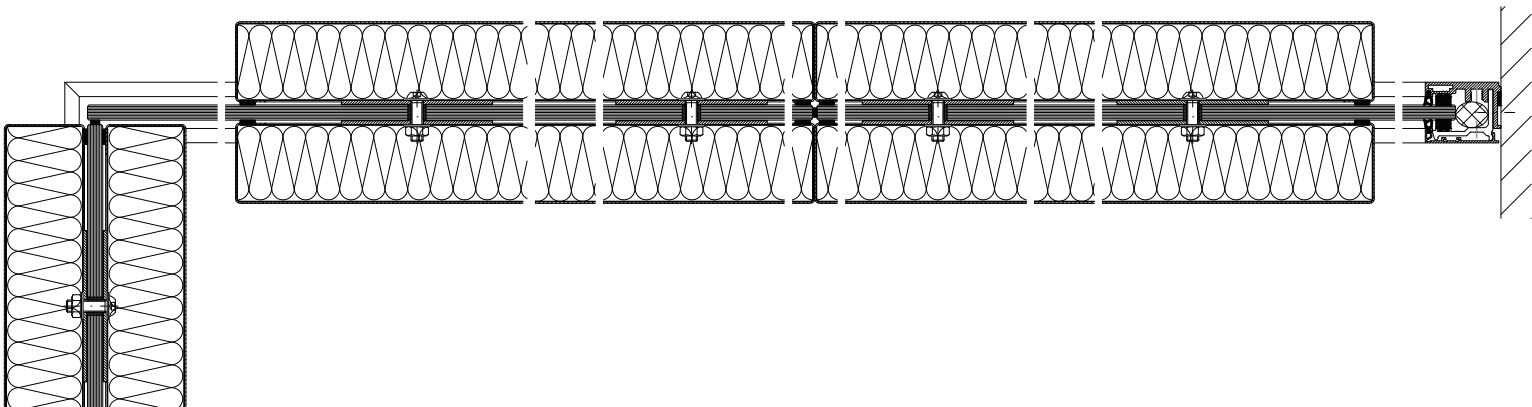
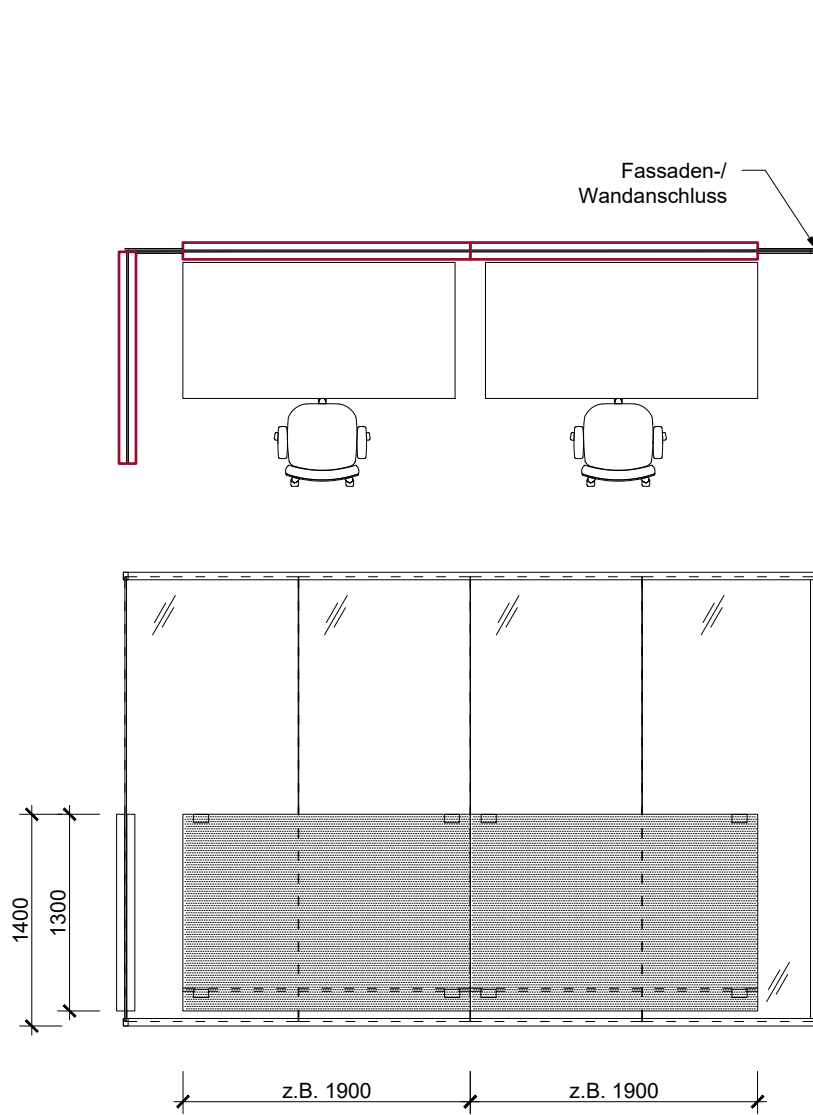


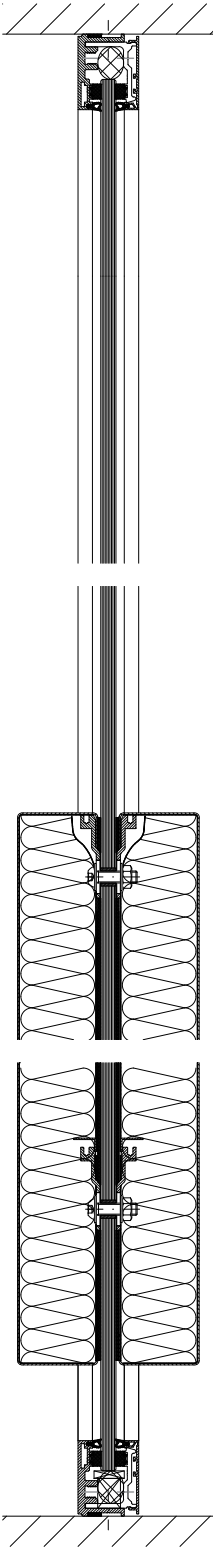
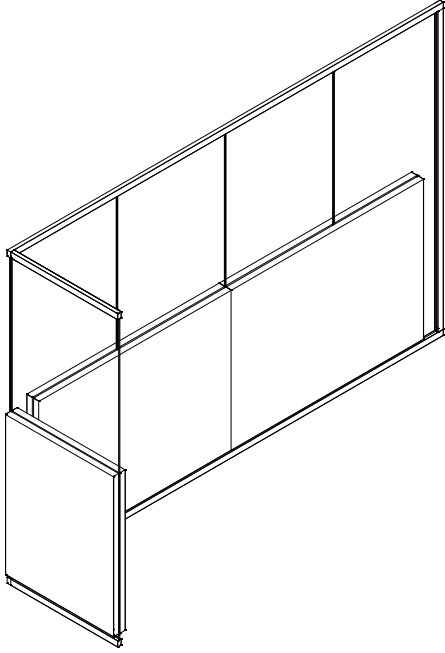
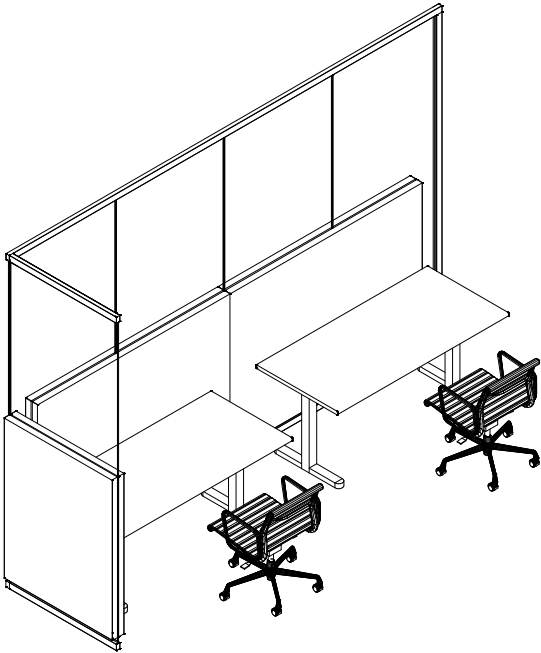
## 1.2 Wand in L-Form Absorber horizontal

### 1.2.2 Wand in L-Form lang

Ansicht und Draufsicht M 1:50

Horizontal- und Vertikalschnitt M 1:5



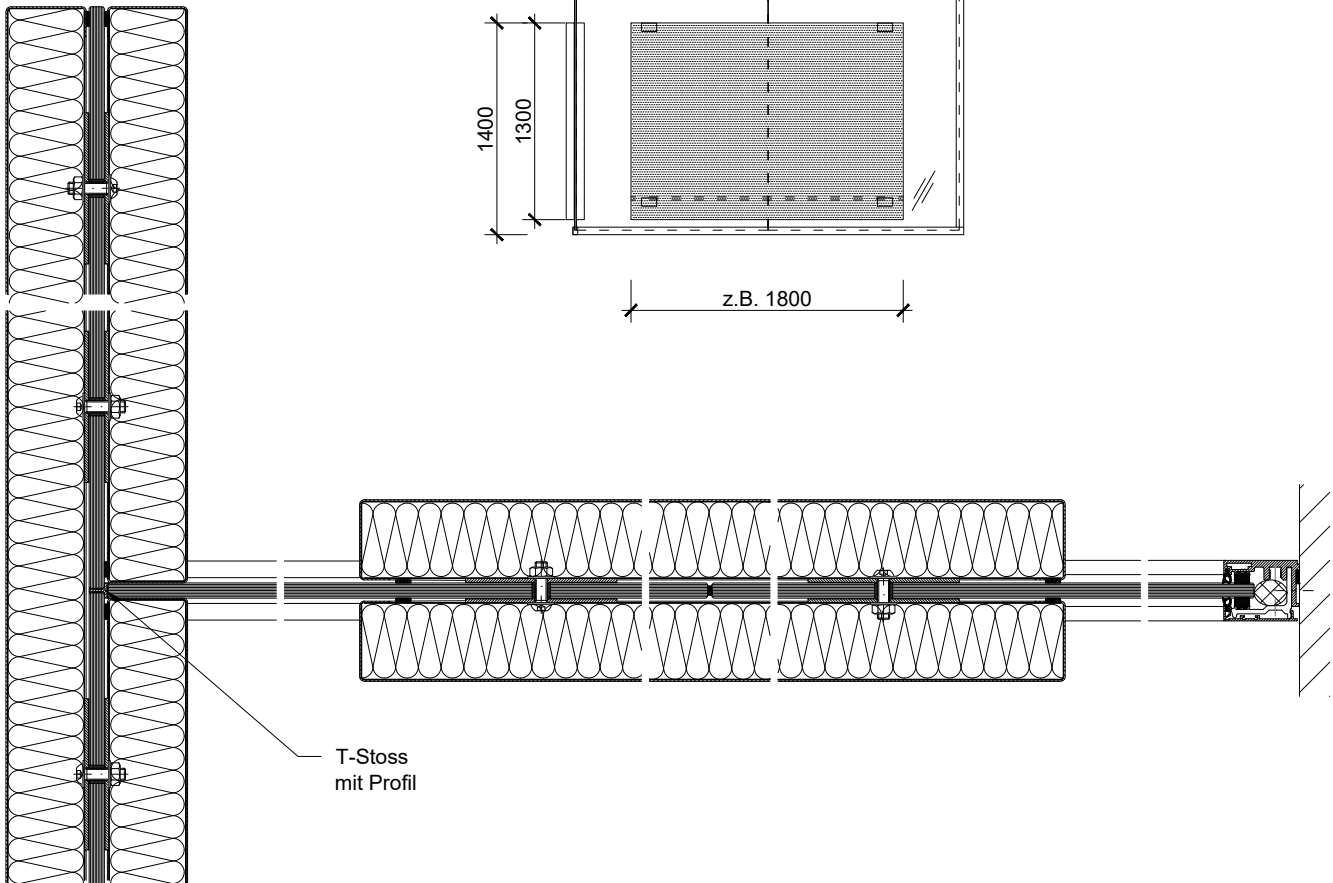
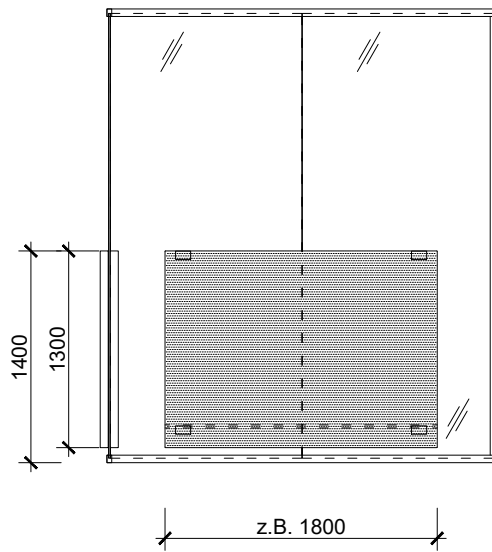
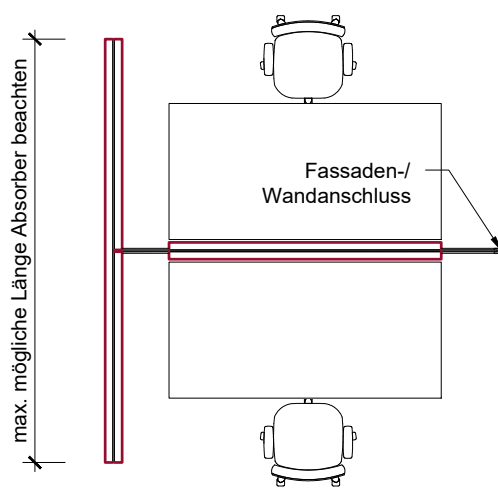


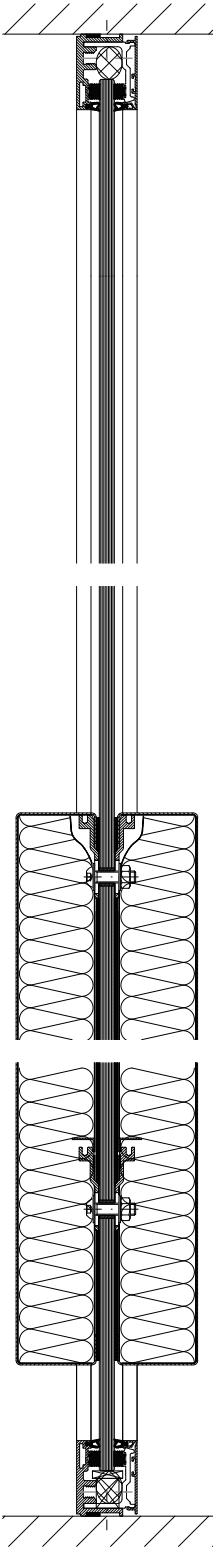
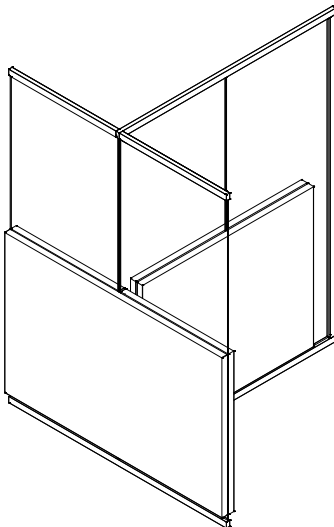
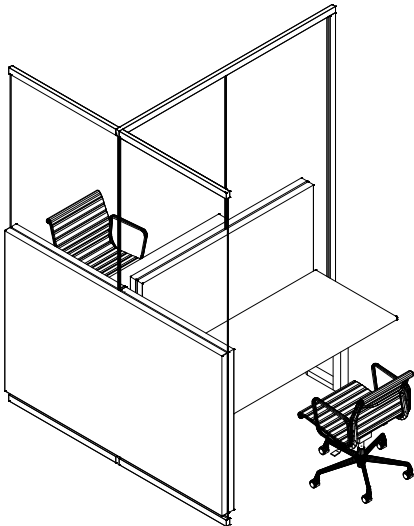
### 1.3 Wand in T-Form Absorber horizontal / Absorber Flurseite einteilig

#### 1.3.1 Wand in T-Form kurz

Ansicht und Draufsicht M 1:50

Horizontal- und Vertikalschnitt M 1:5



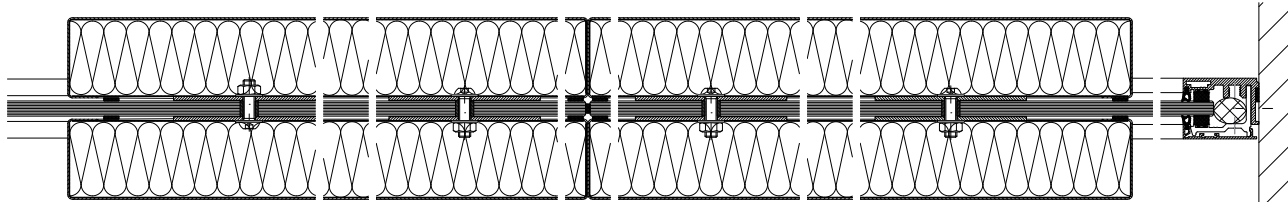
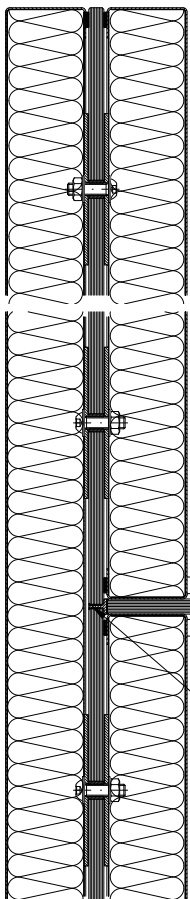
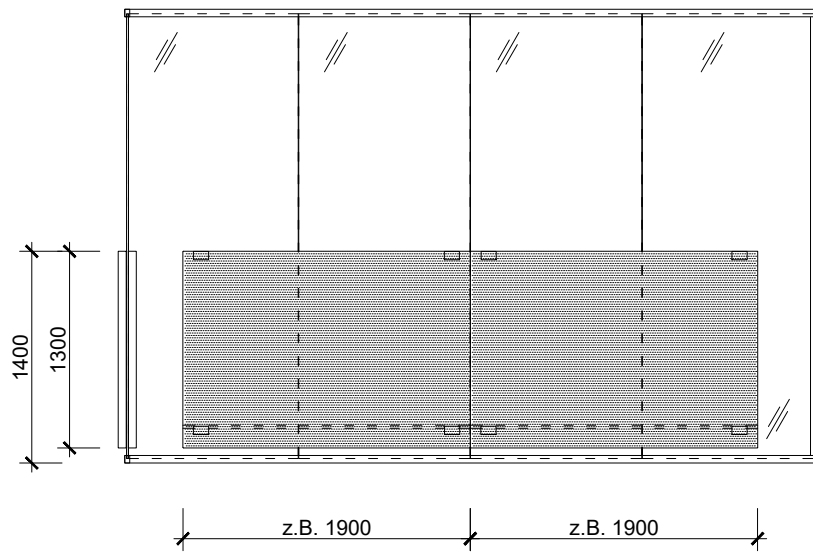
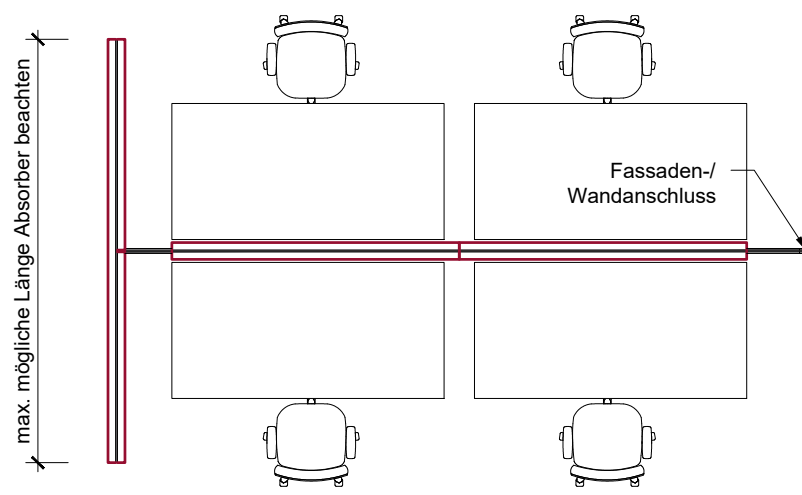




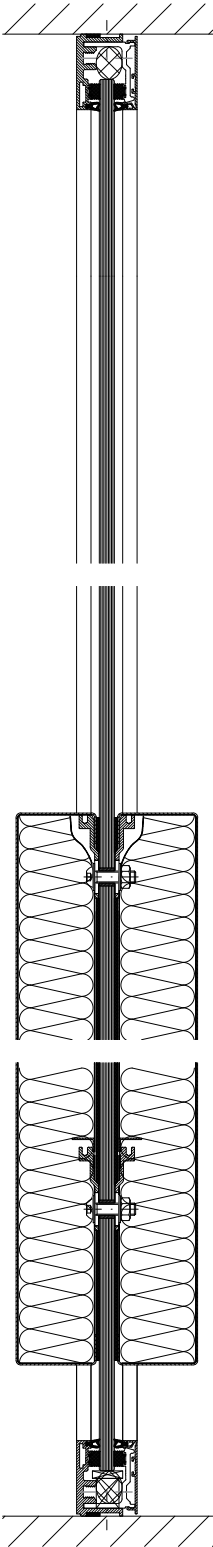
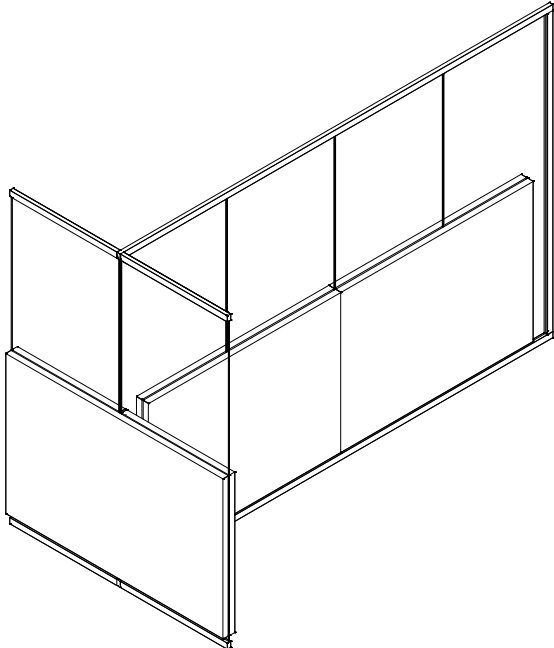
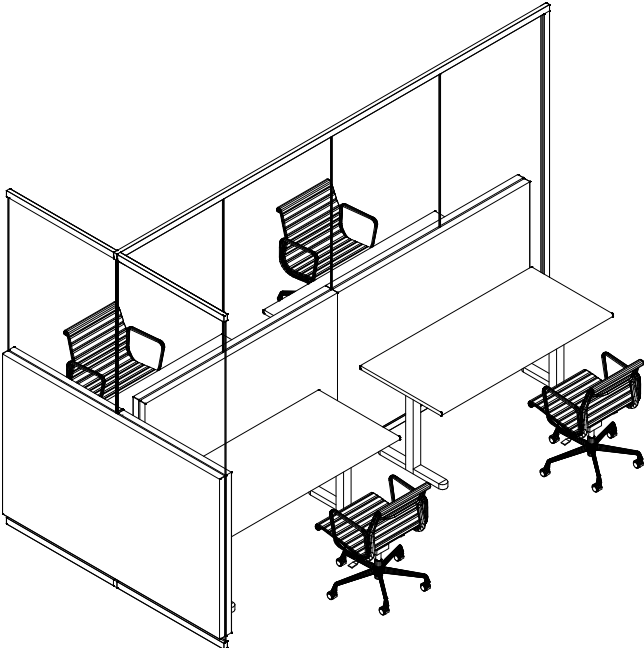
1.3 Wand in T-Form  
 Absorber horizontal / Absorber Flurseite einteilig

1.3.2 Wand in T-Form lang

Ansicht und Draufsicht M 1:50  
 Horizontal- und Vertikalschnitt M 1:5



T-Stoss mit Profil

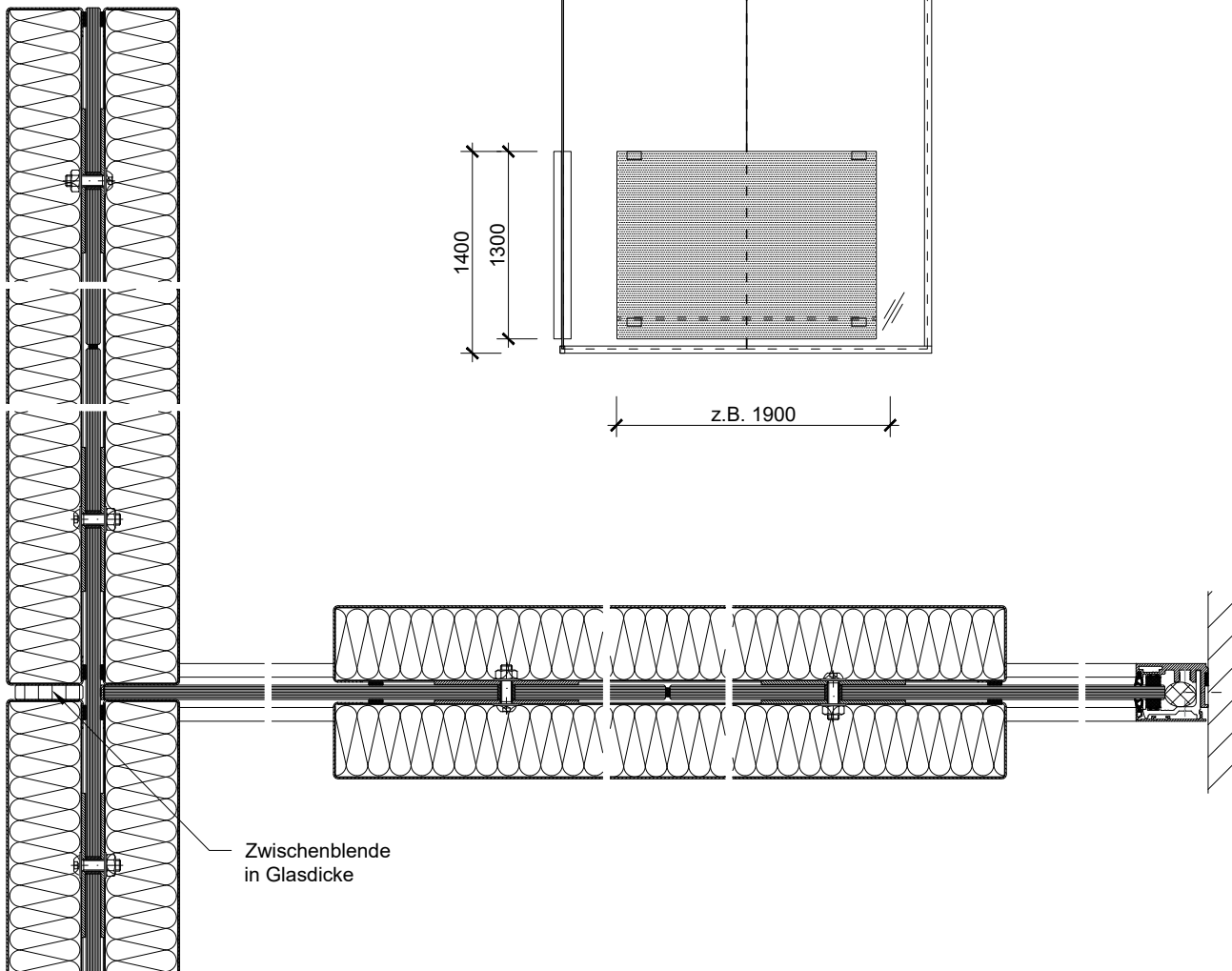
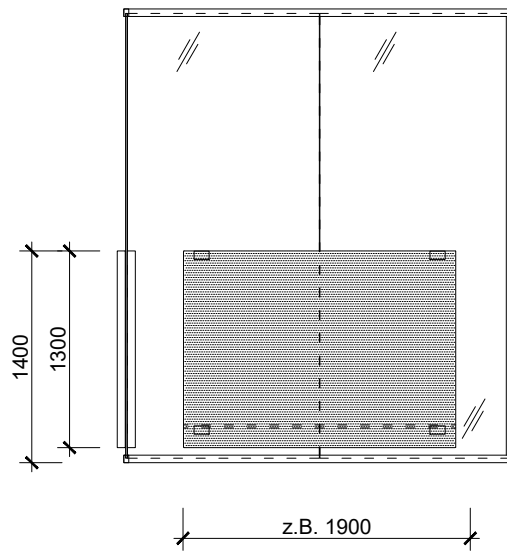
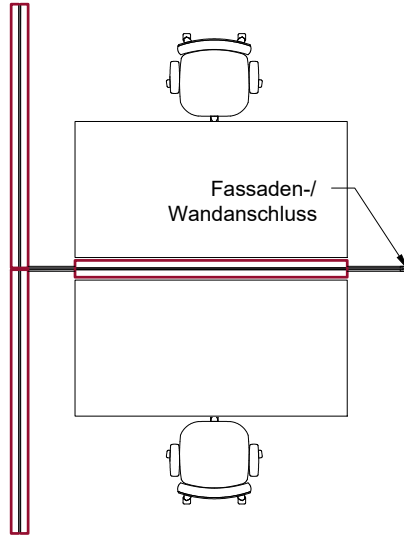


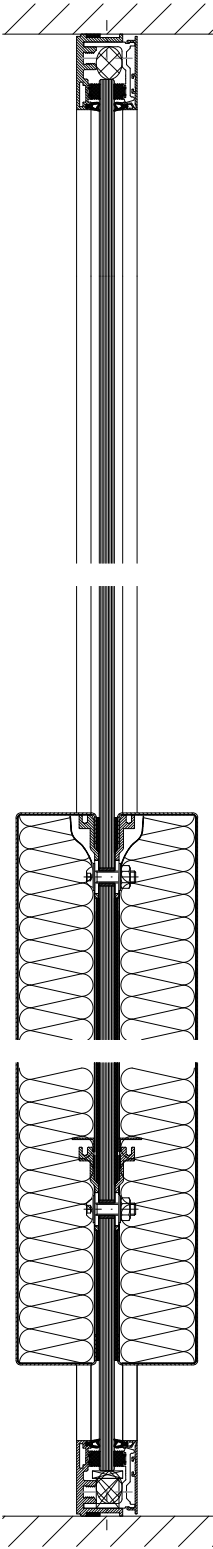
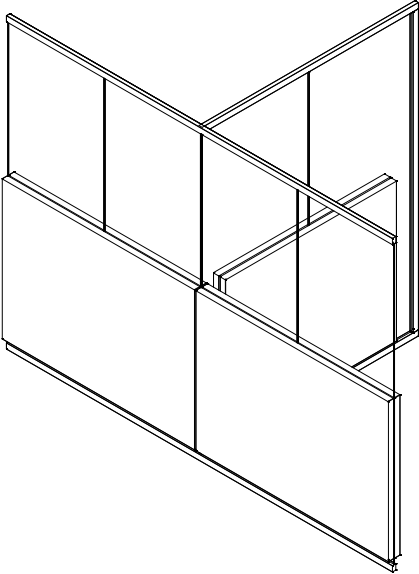
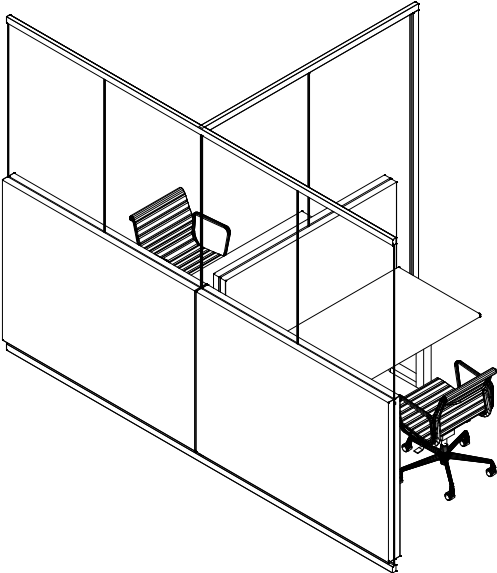
## 1.4 Wand in T-Form Absorber horizontal / Absorber Flurseite zweiteilig

### 1.4.1 Wand in T-Form kurz

Ansicht und Draufsicht M 1:50

Horizontal- und Vertikalschnitt M 1:5



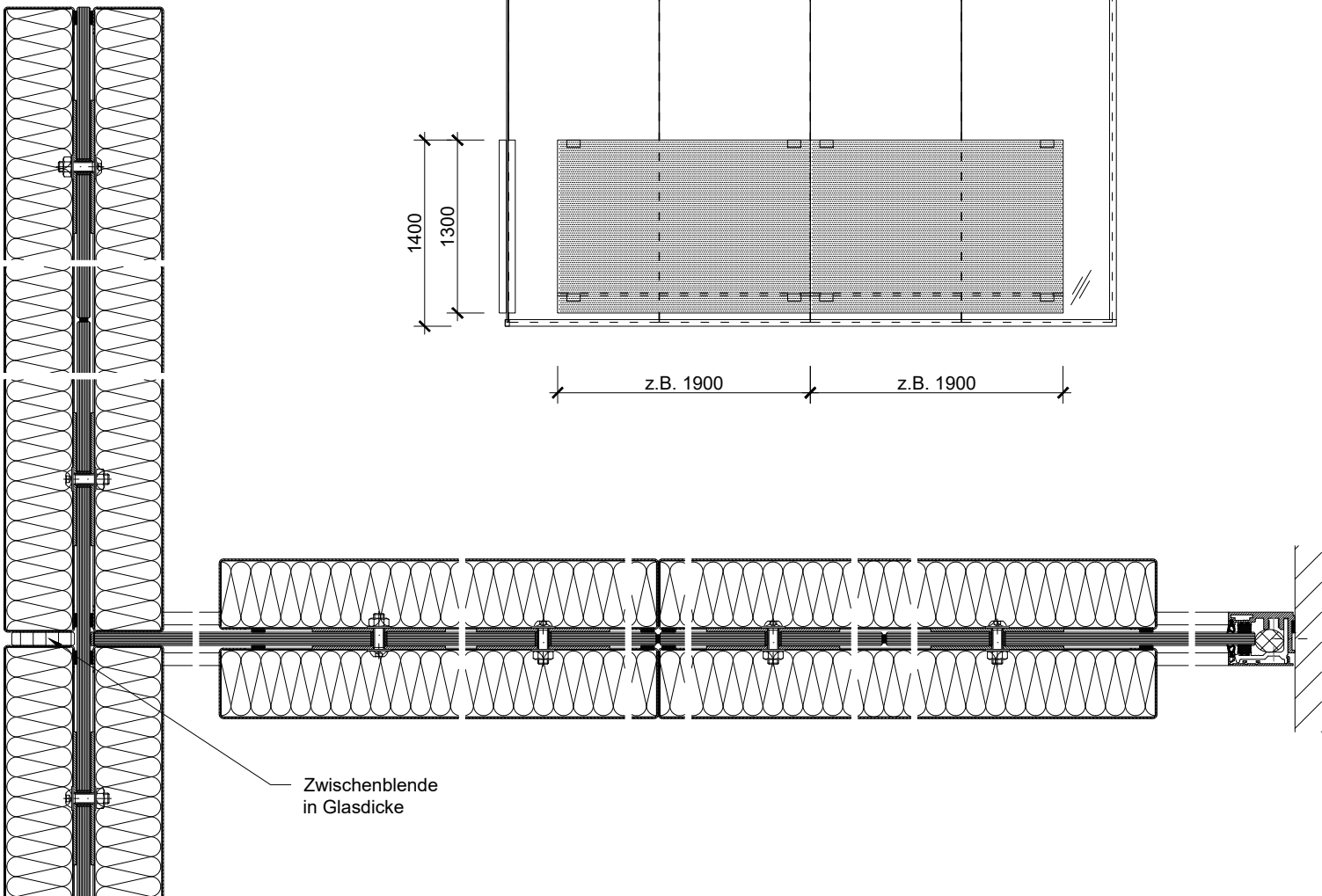
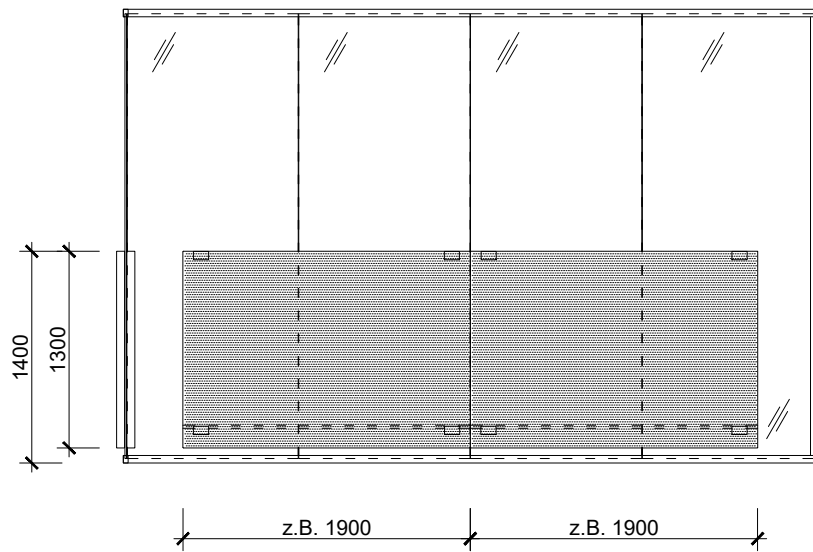
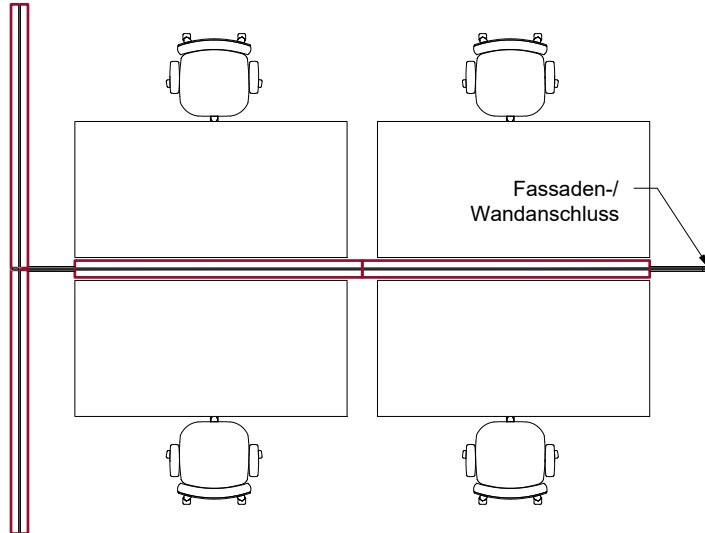


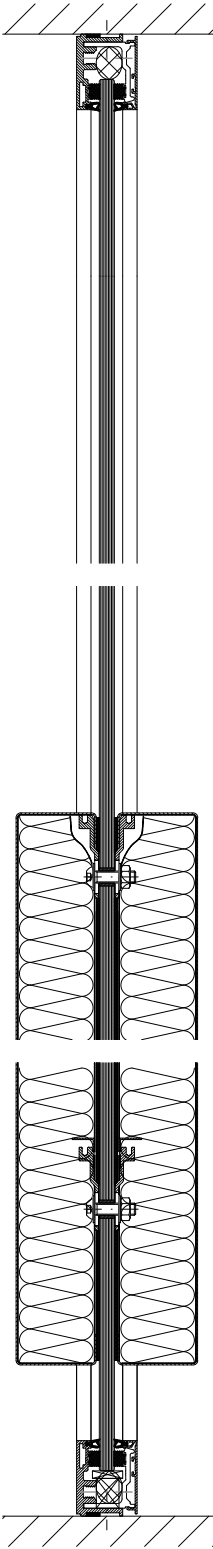
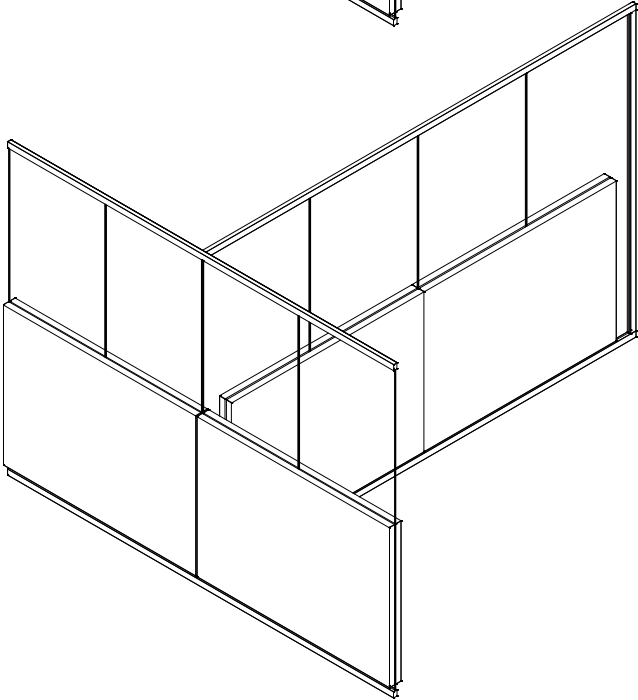
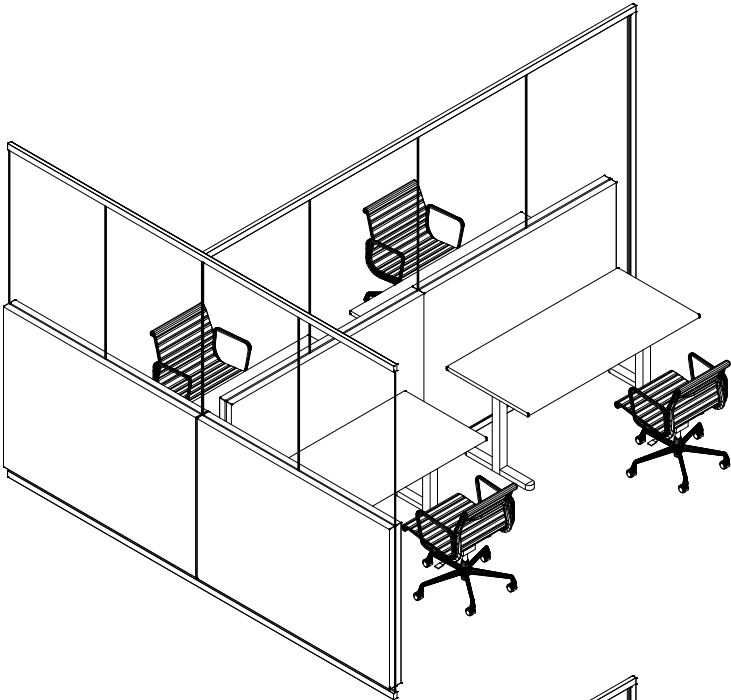
1.4 Wand in T-Form  
 Absorber horizontal / Absorber Flurseite zweiteilig

1.4.2 Wand in T-Form lang

Ansicht und Draufsicht M 1:50

Horizontal- und Vertikalschnitt M 1:5

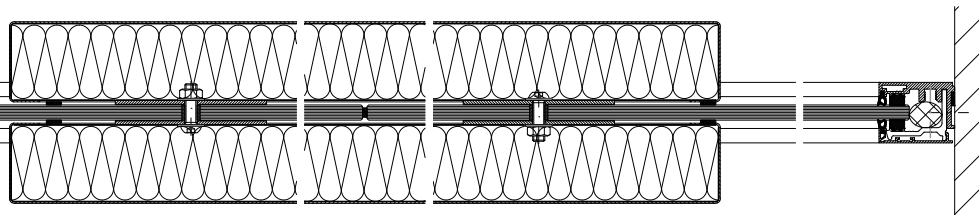
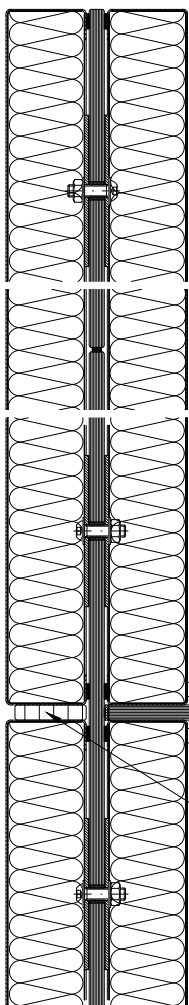
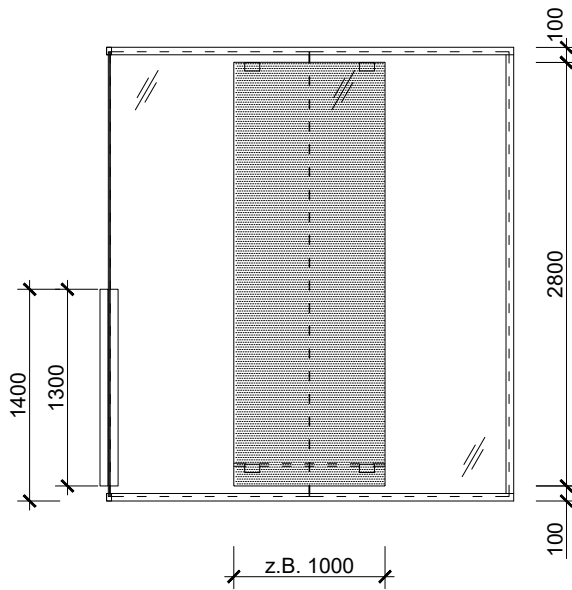
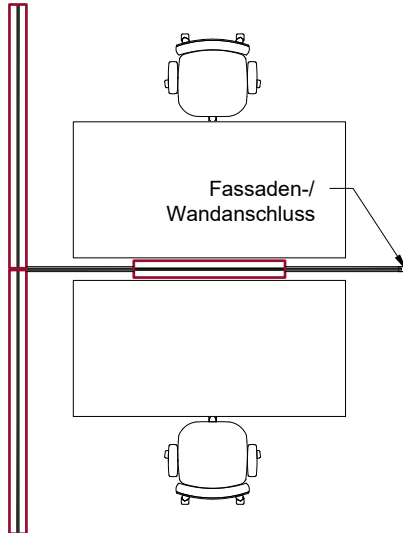




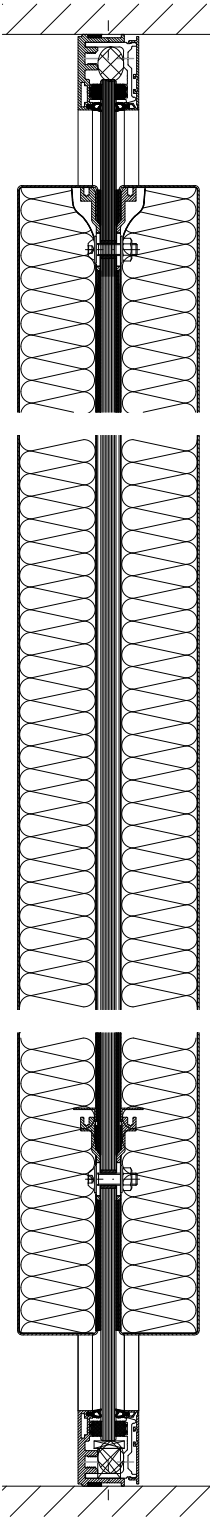
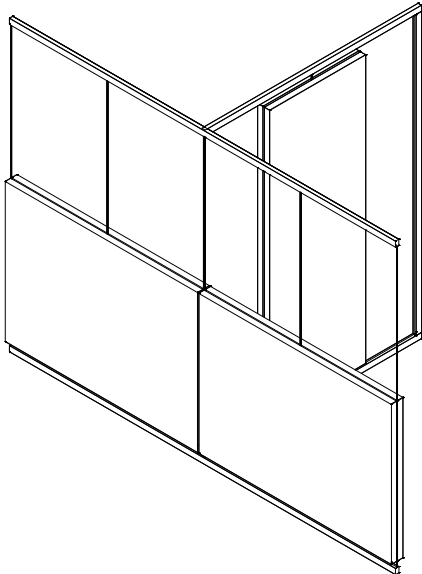
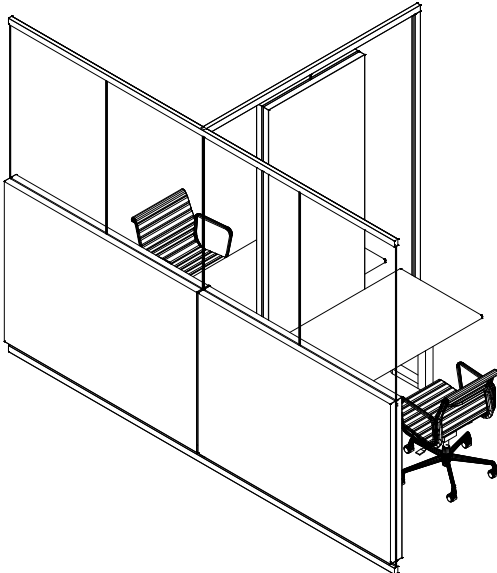
1.5 Wand in T-Form  
 Absorber am Arbeitsplatz vertikal /  
 Absorber Flurseite horizontal und zweiteilig

1.5.1 Wand in T-Form kurz

Ansicht und Draufsicht M 1:50  
 Horizontal- und Vertikalschnitt M 1:5



Zwischenblende  
 in Glasdicke

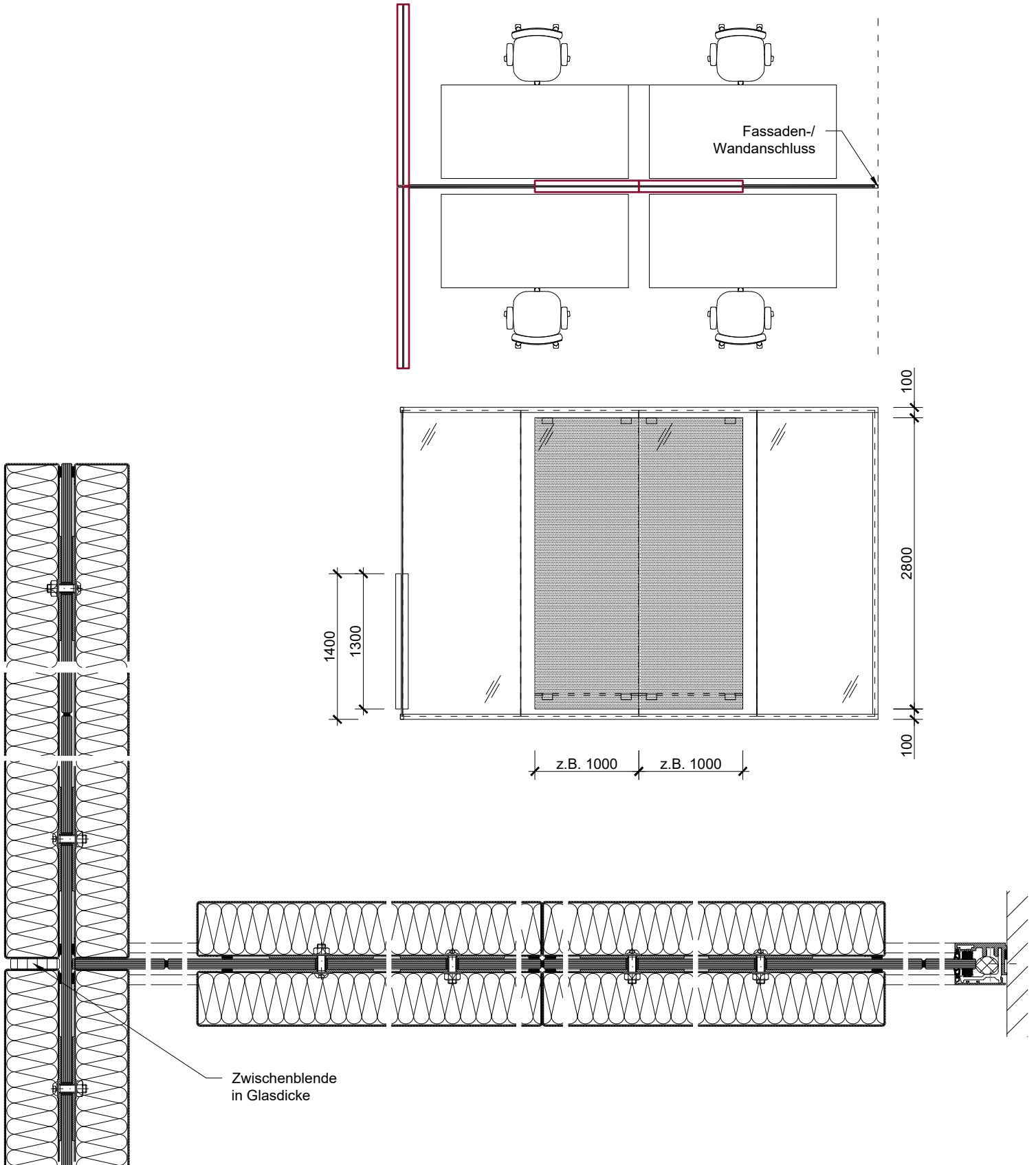


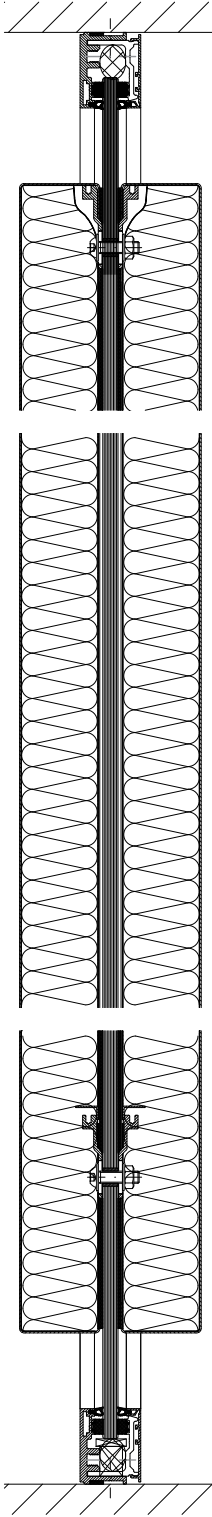
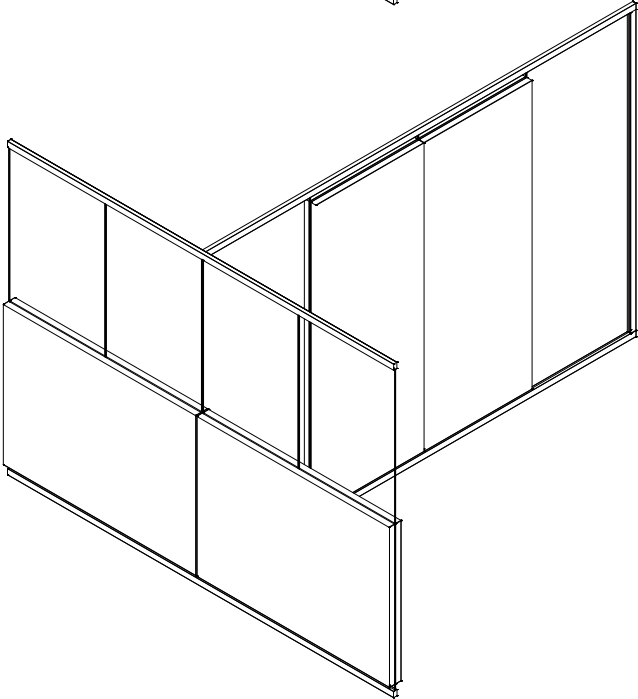
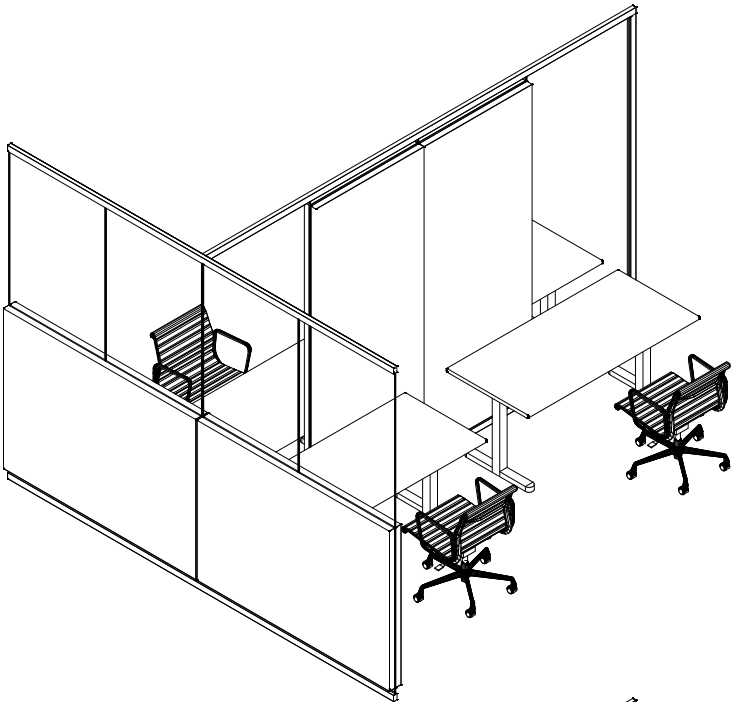


### 1.5 Wand in T-Form Absorber am Arbeitsplatz vertikal / Absorber Flurseite horizontal und zweiteilig

#### 1.5.2 Wand in T-Form lang

Ansicht und Draufsicht M 1:50  
Horizontal- und Vertikalschnitt M 1:5



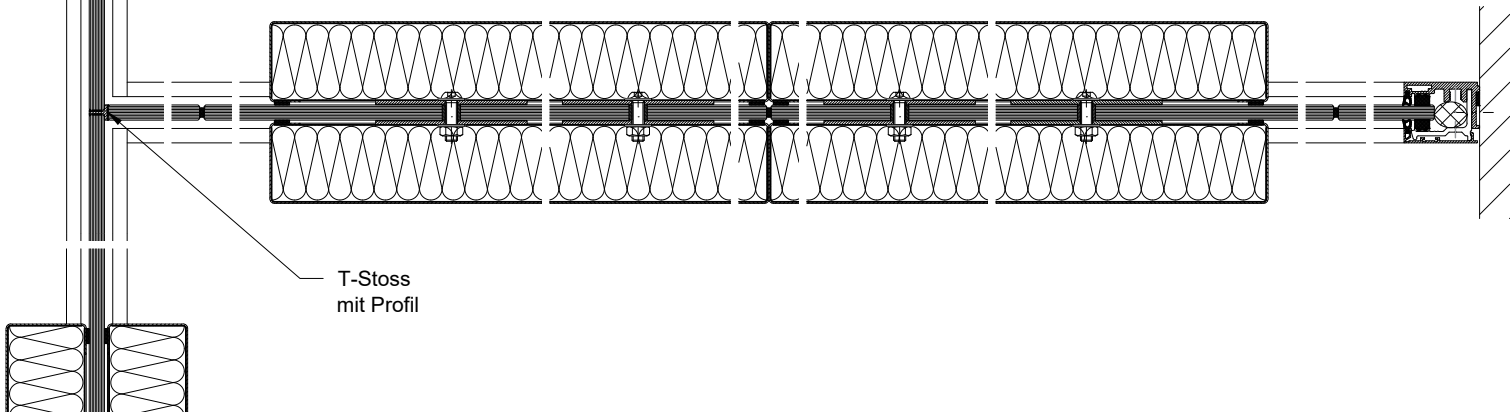
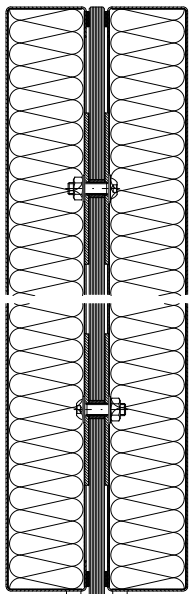
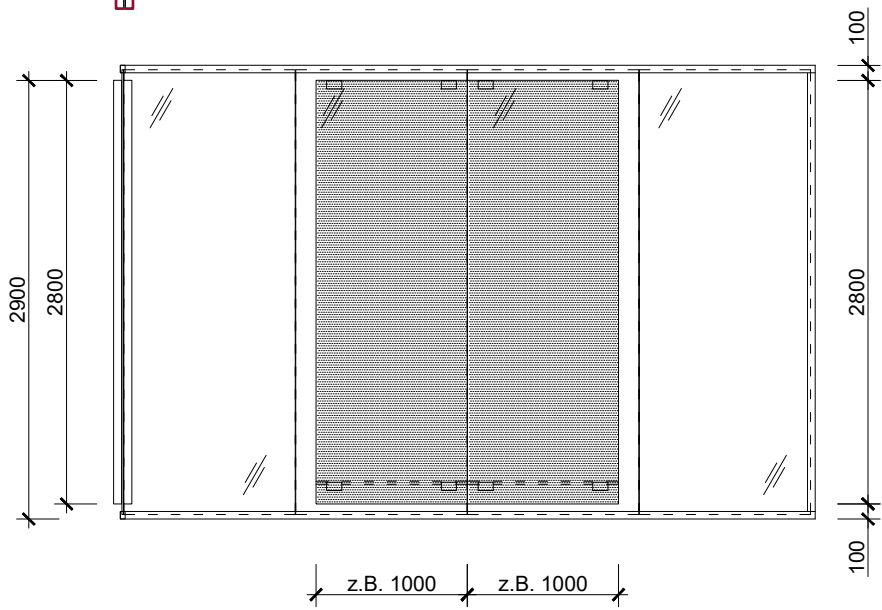
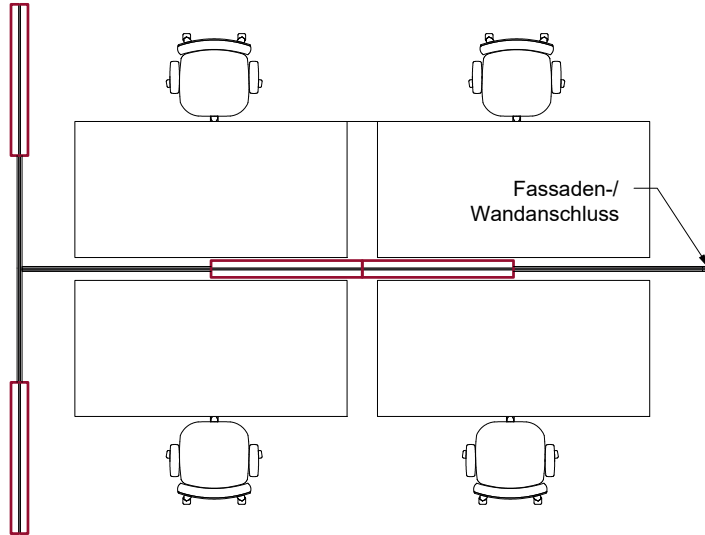


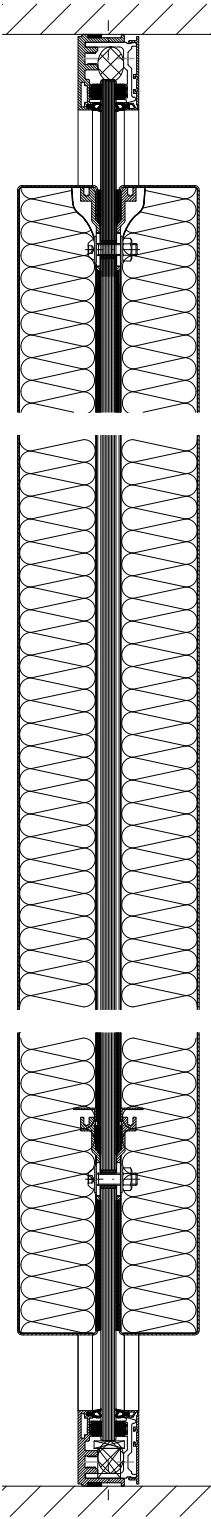
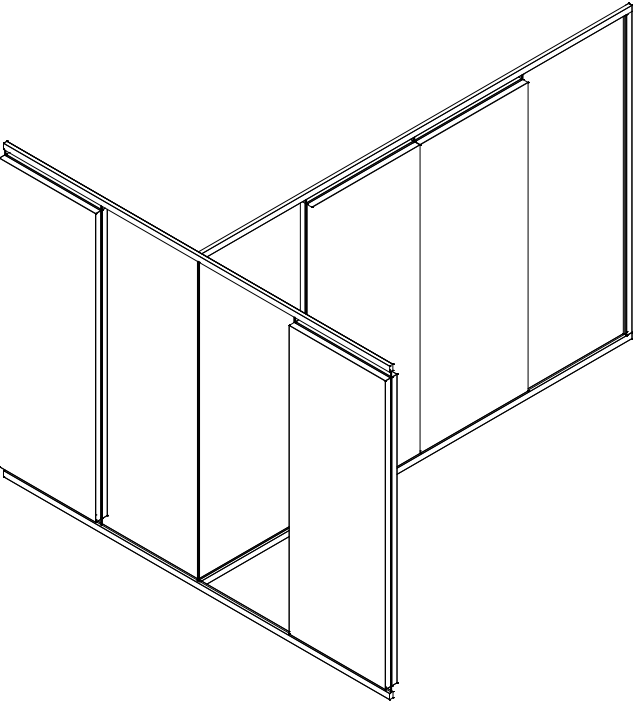
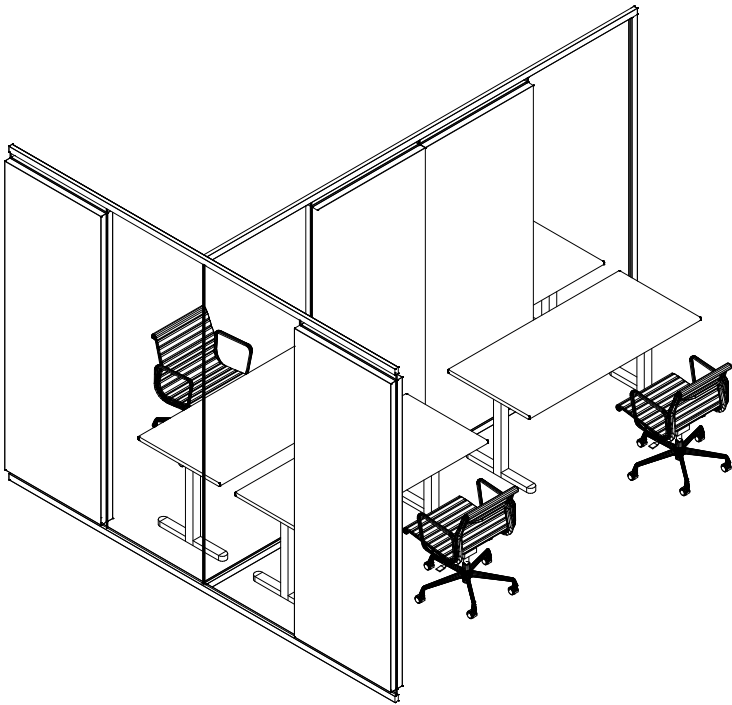
### 1.6 Wand in T-Form Absorber vertikal

#### 1.6.1 Wand in T-Form lang

Ansicht und Draufsicht M 1:50

Horizontal- und Vertikalschnitt M 1:5



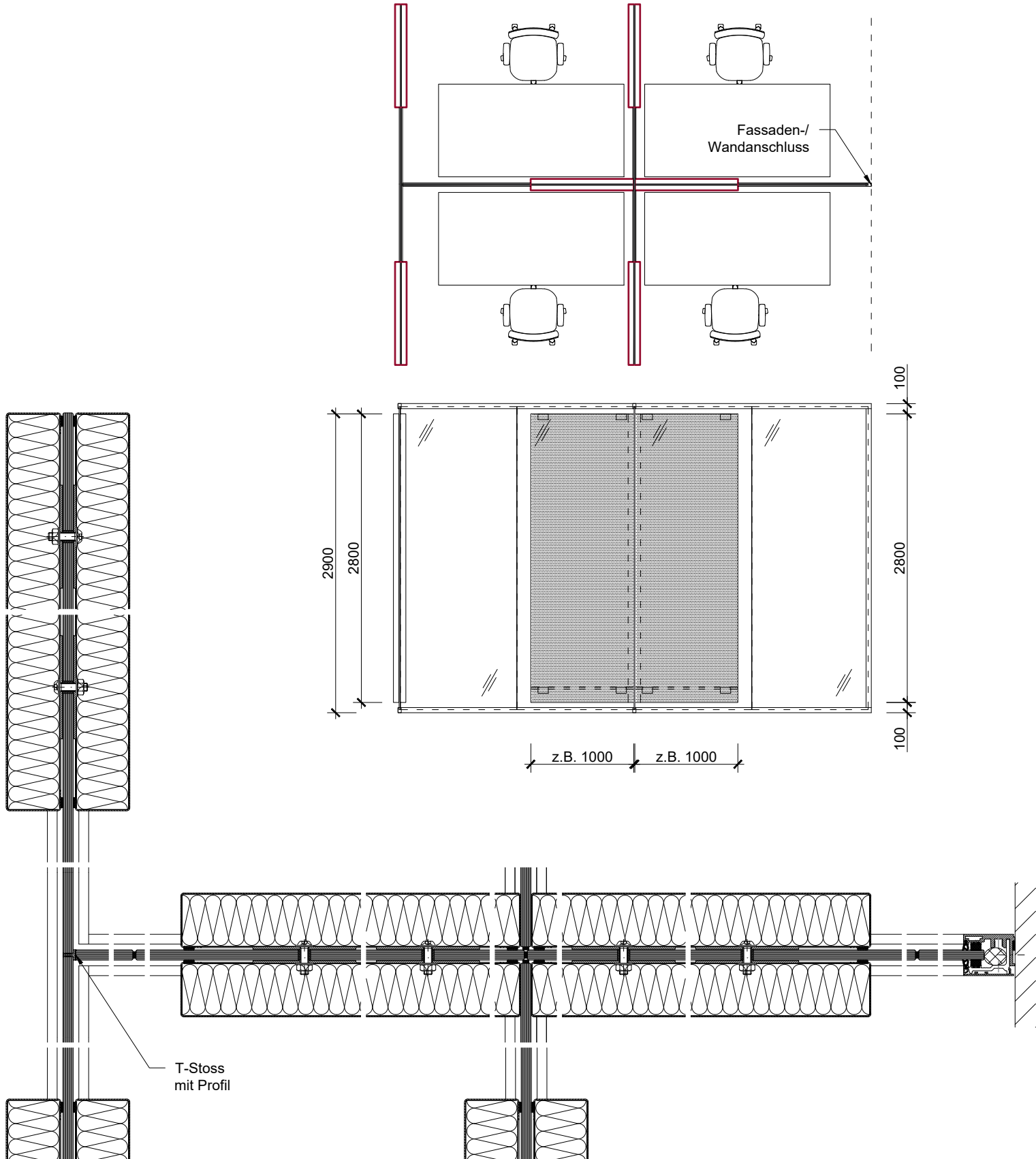


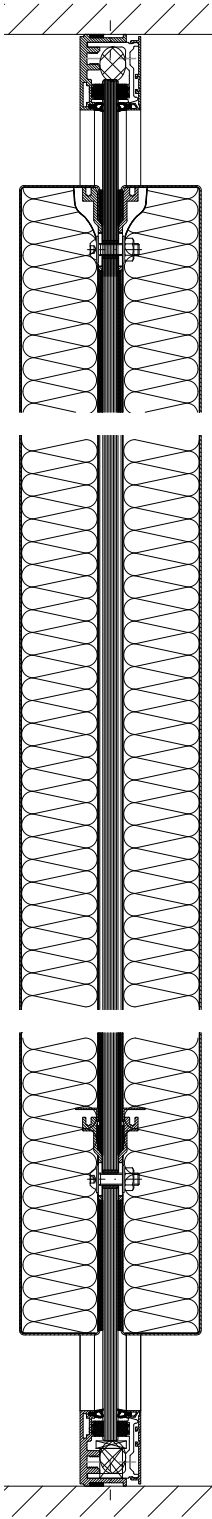
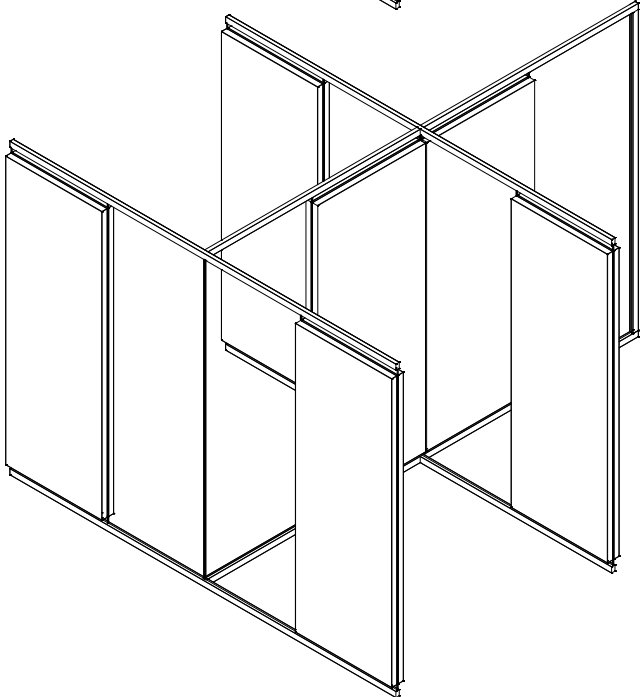
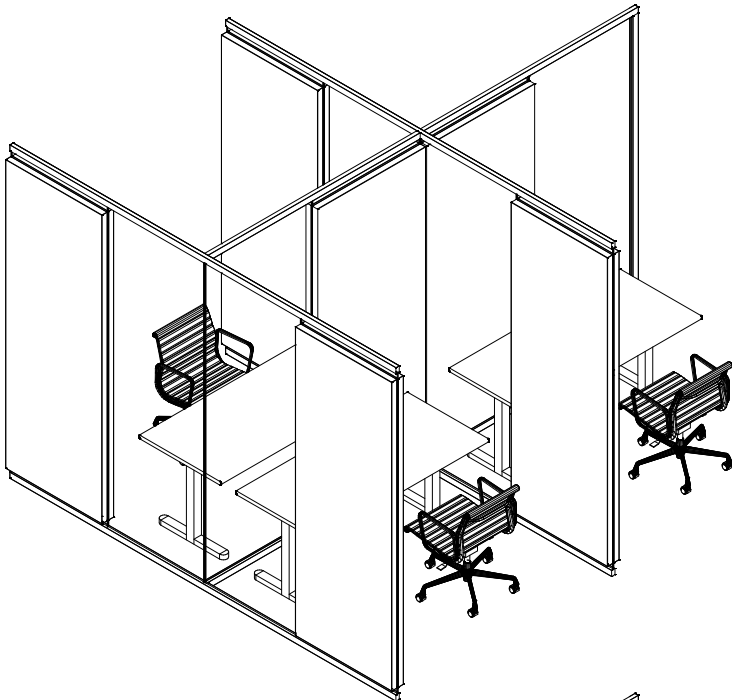
### 1.6 Wand in T-Form Absorber vertikal

#### 1.6.2 Wand in T-Form lang mit Mittelwand

Ansicht und Draufsicht M 1:50

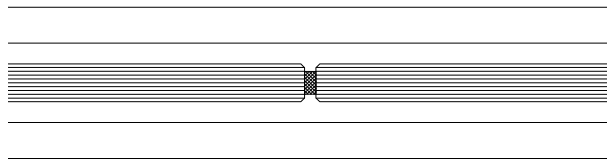
Horizontal- und Vertikalschnitt M 1:5



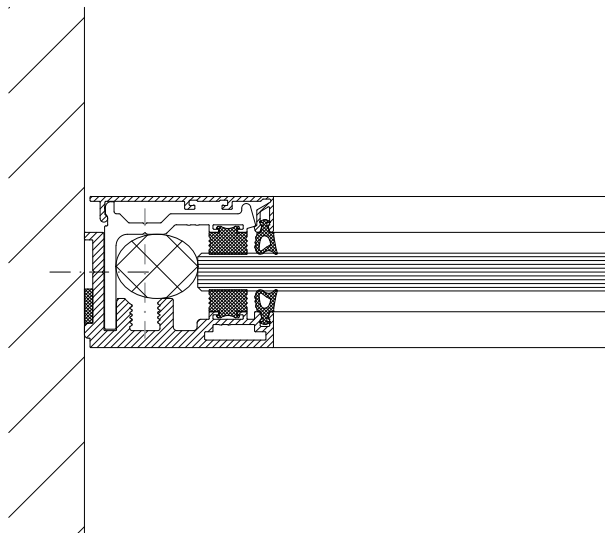


## 2 Systemdetails System 3400

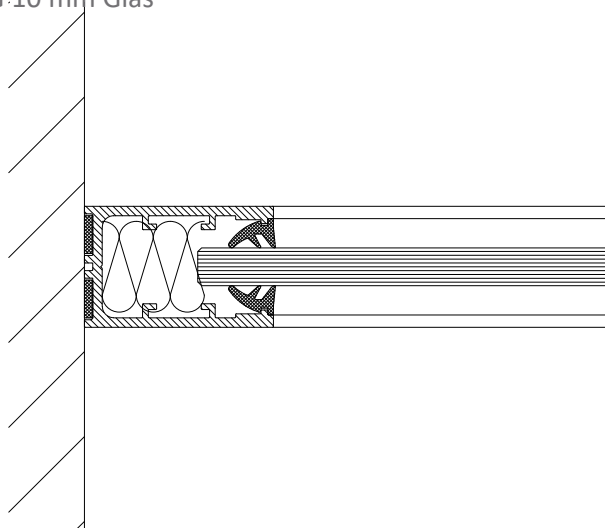
- 2.1 Achsrasterfuge AR  
 Ganzglaselement GG 10 mm Glas  
 Glasverbindung mit Klebeband  
 34-H-AR-195  
 M 1:2



- 2.2 Wandanschluss WA  
 Ganzglaselement GG 10 mm Glas  
 50 mm Profil  
 34-H-WA-038  
 M 1:2

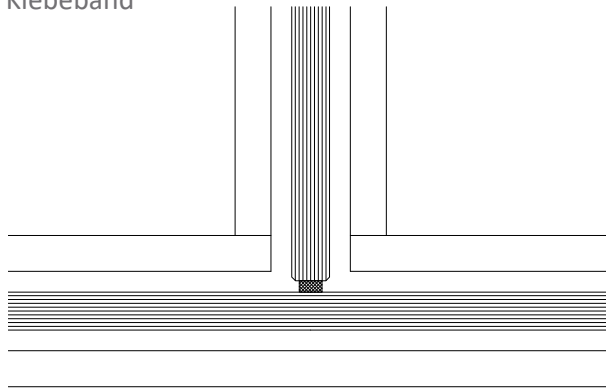


- 2.3 Wandanschluss WA  
 Ganzglaselement GG 10 mm Glas  
 LT32 mm Profil  
 M 1:2

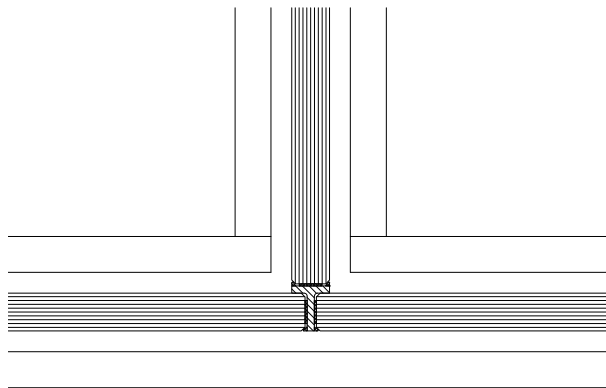


## 2 Systemdetails System 3400

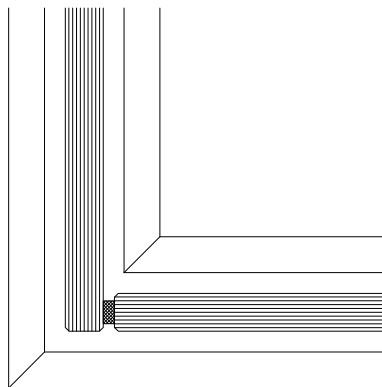
- 2.4 T-Anschluss als Systemanschluss TA  
 Ganzglaselement GG 10 mm Glas  
 Glasverbindung mit Klebeband  
 34-H-TA-197  
 M 1:2



- 2.5 T-Anschluss als Systemanschluss TA  
 Ganzglaselement GG 10 mm Glas  
 Glasverbindung mit Glasstoßprofil  
 34-H-TA-182  
 M 1:2



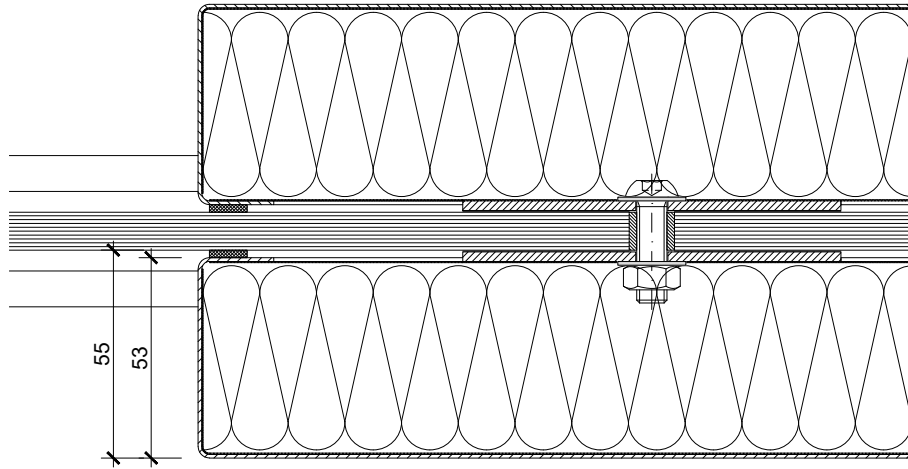
- 2.6 Ganzglasecke 90° EC  
 Ganzglaselement GG 10 mm Glas  
 Glasverbindung mit Klebeband  
 34-H-EC-196  
 M 1:2



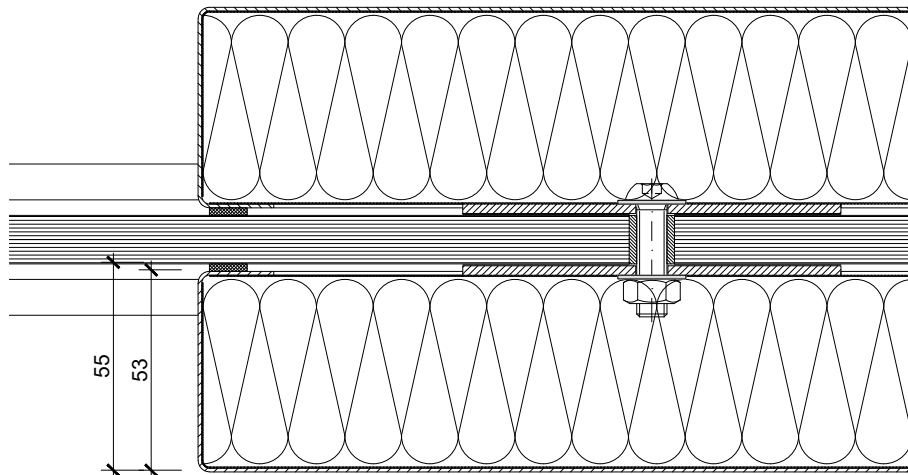


### 3 System 7400 alternative Glasdicken bei gleicher Absorberdicke

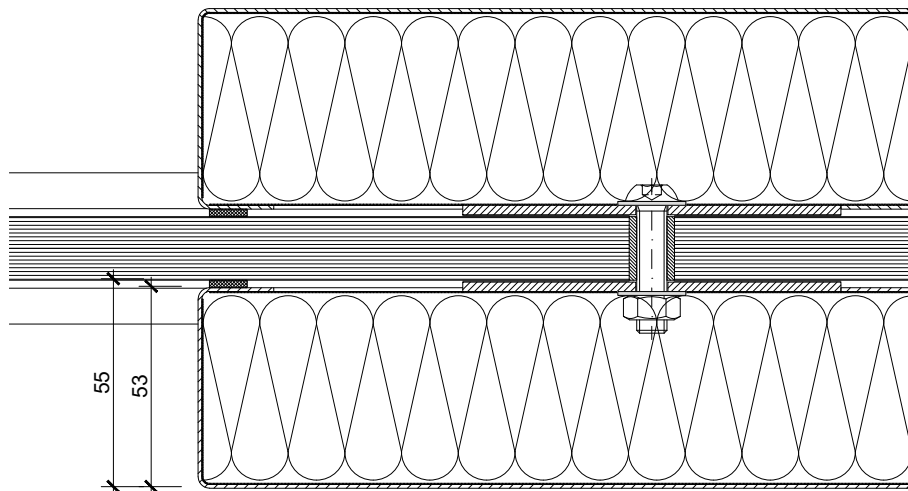
3.1 Ausführung:  
 Glas 10 mm Absorberdicke 53 mm  
 70-7400-H-WA-004  
 M 1:2



3.2 Ausführung:  
 Glas 12 mm Absorberdicke 53 mm  
 70-7400-H-WA-031  
 M 1:2

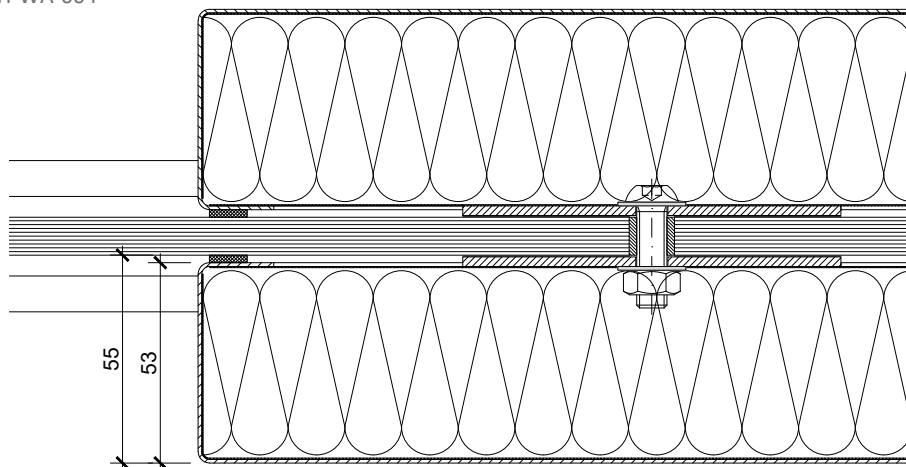


3.3 Ausführung:  
 Glas 16 mm Absorberdicke 53 mm  
 70-7400-H-WA-058  
 M 1:2

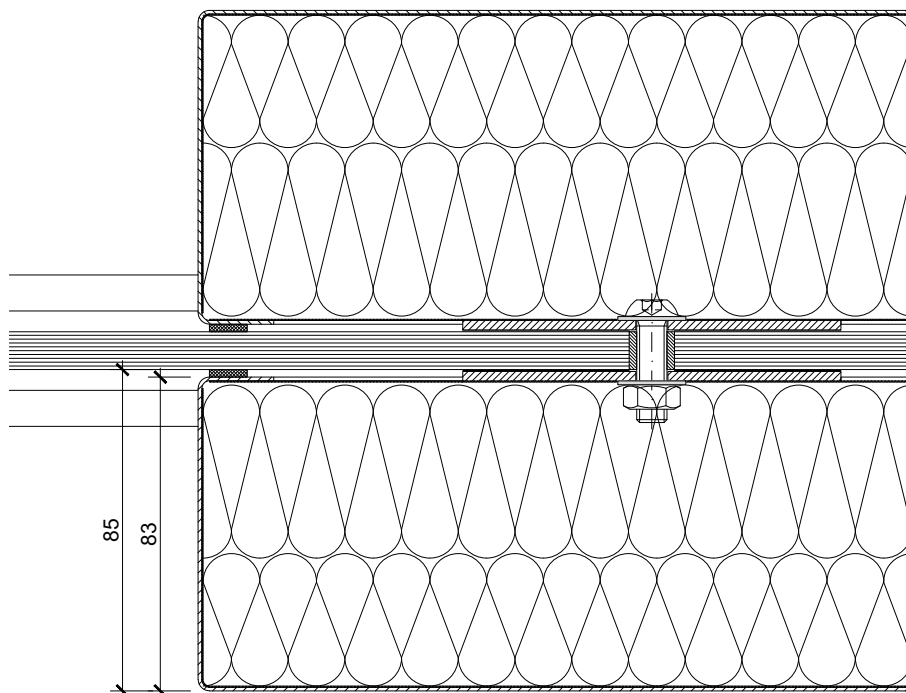


## 4 System 7400 alternative Absorberdicke bei gleicher Glasdicke

- 4.1 Ausführung:  
 Glas 10 mm Absorberdicke 53 mm  
 70-7400-H-WA-004  
 M 1:2



- 4.2 Ausführung:  
 Glas 10 mm Absorberdicke 83 mm  
 70-7400-H-WA-011  
 M 1:2



#### 4 System 7400 alternative Absorberdicke bei gleicher Glasdicke

4.3 Ausführung:  
 Glas 10 mm Absorberdicke 103 mm  
 70-7400-H-WA-018  
 M 1:2

