

Projectdocumentation No. 29  
System 2000 I 2300

Fladgate  
London

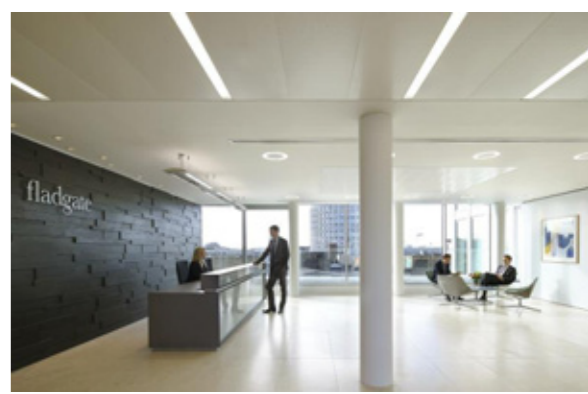
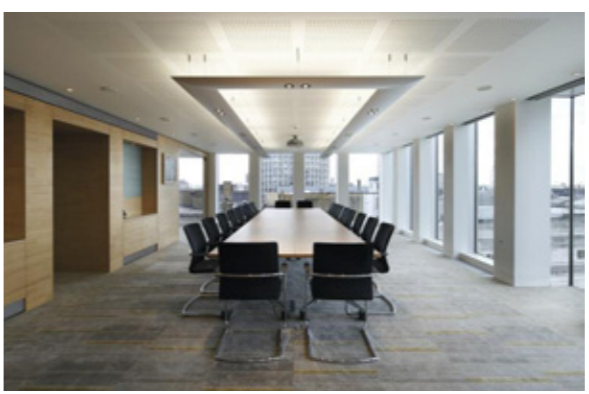






## Exclusive office space in the heart of London

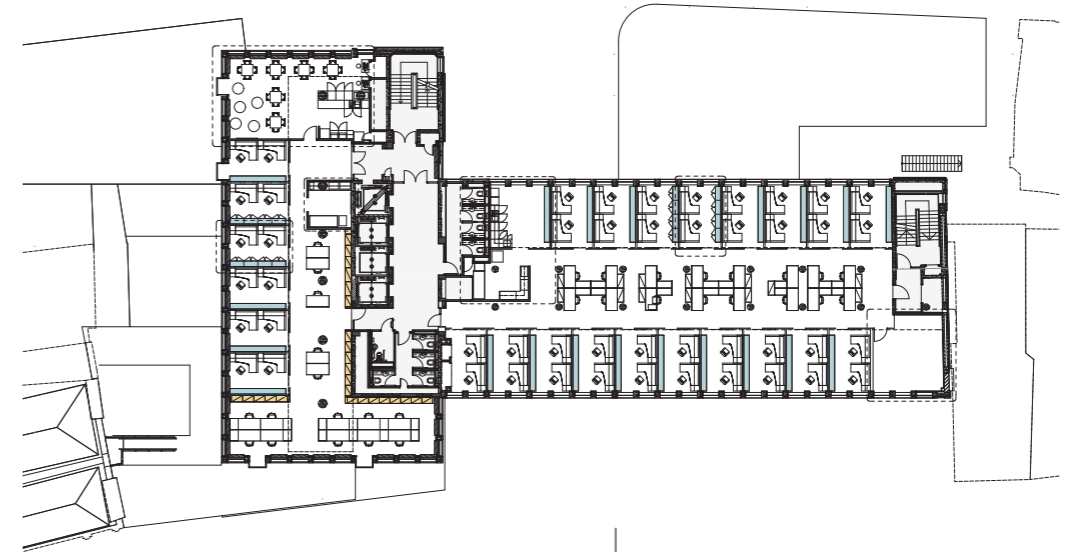
Located in the middle of London's bustling Covent Garden is the new head office of Fladgate, one of England's leading law firms. The modern glass facade of the completely renovated original building in particular creates a unique contrast to the traditional architecture of the adjacent buildings.



### Project Figures

- Client: Fladgate LLP, London
- Architect: John Robertson Architects, London
- Contractor: Overbury PLC, London
- Acoustic Consultants: Hann Tucker Associates, London
  
- Partitions: System 2000 and System 2300
- Storage: System 5000
- Accessories: System Orga

The interior scheme is of the highest quality throughout and was designed by John Robertson Architects and fitted out by Overbury PLC as the main contractor. The space is perfectly in keeping with the high standards demanded by the practice for elegance, flexibility and discretion.



Fladgate I System 2000 / 2300





## Sliding door with sound insulation

The highlight of the office is a newly designed high performance acoustic glass sliding door with a certified rating of 34 dB. The door, specially designed for this project and used in 90 rooms, combines the practical and design advantages of a sliding door with a sound insulation that caters to the strict requirements for offices and conference rooms.

The minimal frame structure sets new standards, as the demands for a refined sliding glass door and sound insulation need no longer be mutually exclusive.



### Technical design sliding door

- Highly sound-insulating glass sliding door (patent applied for)
- Floor-guided design with press-on seal
- Sound insulation: up to 34 dB Rwp





## Transparency, discretion and flexibility

In the new London offices, the partition wall systems 2000 and 2300 once again prove their multi-faceted quality. Surface-flush corridor walls ensure a bright and transparent atmosphere in both the managing board areas and in the zones with individual offices. The sound insulation values guarantee the necessary discretion for concentration when working and for confidentiality when discussing legal matters.

Cabinets with swing doors and sliding doors are available for filing documents. In combination with the partition wall systems, they form a creative and functional unit for flexible office organisation.



Individualized workplace lighting

### Technical design:

#### System 2000

- Corridor wall with front-flush glazing
- Modular width: up to 1.600 mm
- Office partition walls designed as solid walls with vertical organisation system
- Illuminated shelves with integrated LED system
- Sound insulation of office wall: 50 dB Rwp

#### System 2300

- Corridor wall with surface-flush structural glazing
- Sound insulation of corridor wall: 45 dB Rwp
- Sound insulation of glass door 100 mm: 42 dB Rwp



**Strähle Raum-Systeme GmbH**

[www.straehle.de](http://www.straehle.de)  
[info@straehle.de](mailto:info@straehle.de)

Gewerbestraße 6  
71332 Waiblingen (Stuttgart)  
Tel.: 00 49 (0) 71 51.17 14-0  
Fax: 00 49 (0) 71 51.17 14-320

Wurzelweg 5  
14822 Borkheide (Berlin)  
Tel.: 00 49 (0) 338 45.66-0  
Fax: 00 49 (0) 338 45.66-200

**Austria:**

Kühweg 22  
A-9612 St. Georgen  
Tel.: 00 43 (0) 42 56.20 126 - 12  
Fax: 00 43 (0) 42 56.20 126 - 20

**Switzerland:**

Sales Office  
Dellenbodenweg 1  
CH-4452 Itingen  
Tel.: 00 41 (0) 61.463 13 32  
Fax: 00 41 (0) 61.463 13 33