

# Partition System 3400



# System 3400

Fully-glazed system  
22 - 40 mm wall thickness

The System 3400 fully-glazed partition wall combines maximum transparency with cost efficiency. Its structure is formed by flexible aluminium floor and ceiling profiles which, can incorporate a wide range of glazing types. The glazed profiles are easy to install and allow for building tolerances. You can choose from a number of different sliding and hinged door elements made of glass or wood, with either aluminium or wooden block frames.

The System 3400 partition wall offers great variability while at the same time reducing the design to the essentials. It is fully compatible with other Strähle partition wall systems and suitable for corridors in which high transparency is required. Planners can vary the degree of transparency and the appearance of the glazing as desired by using adhesive films and decals. The System 3400 can equally be used to create highly sound-insulated glass fin connections on façades, also in conjunction with insulated glass. This makes the product particularly suitable for companies that wish to see their open working culture reflected in the structure of their rooms.

## Design

Fully-glazed construction

## Construction

Single glazed 10-20 mm toughened safety glass / acoustic laminated glass

## Element types

Fully-glazed, floor to ceiling

## Surfaces

Aluminium profiles in E6 EV1 or powder-coated

## Wall thickness

22 - 40 mm

## Glass joint

Cruciform dry joint, silicon seal or bonded

## Sound insulation

Up to  $R_{wP}$  41 dB

## Doors

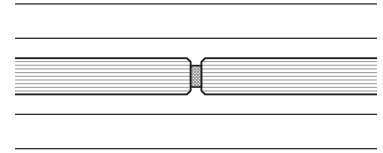
Fully-glazed doors, aluminium-framed doors, solid doors, sliding doors

## Accessories

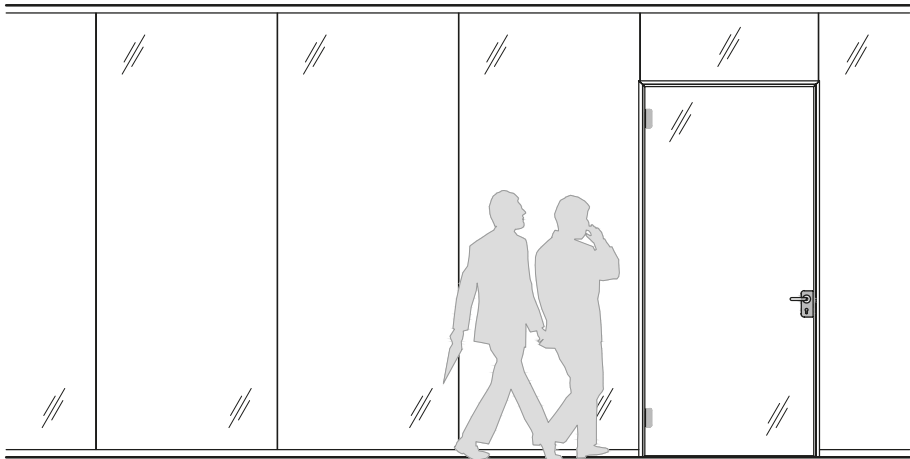
Absorption elements (fitted as a shell in front of the glass)



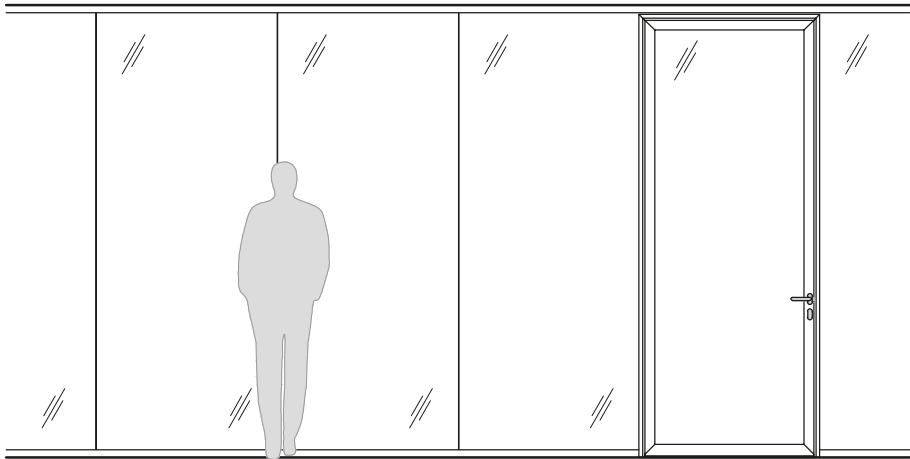
Fully-glazed



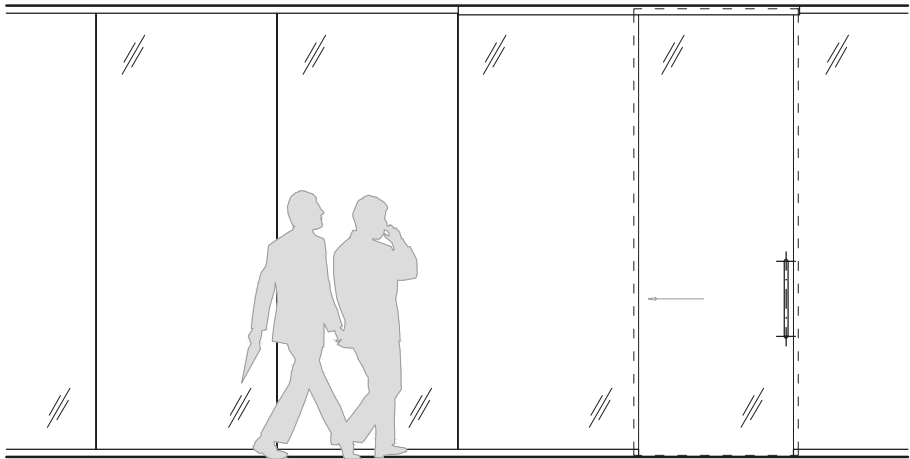




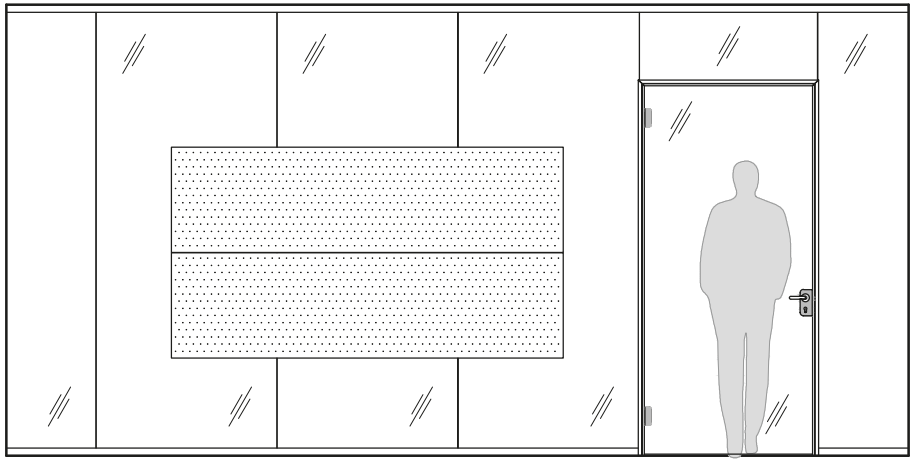
Corridor wall with all-glass door and toplight



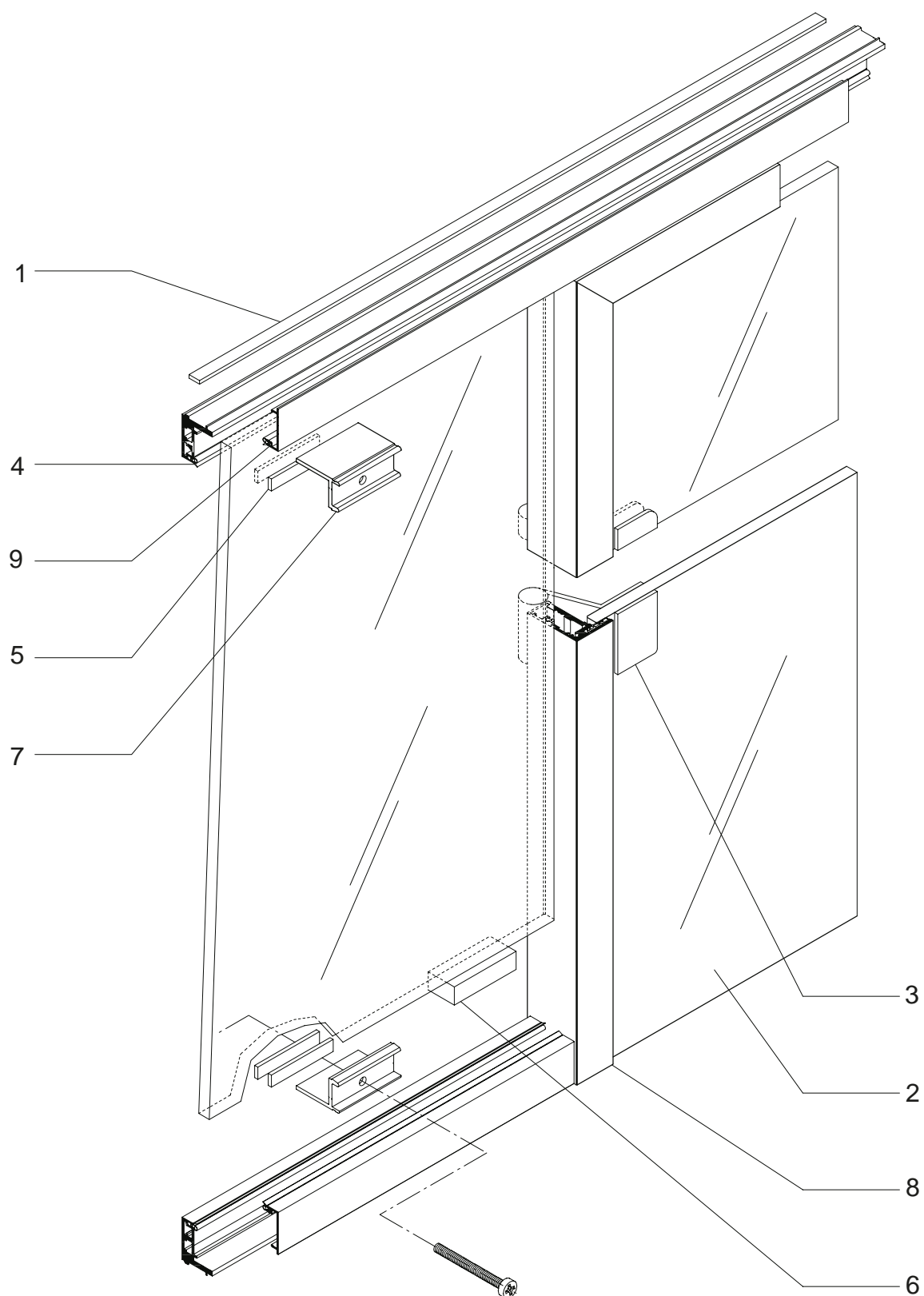
Corridor wall with ceiling-high fully-glazed door



Corridor wall with all-glass sliding door



Glass wall with acoustic absorber



1 Acoustic Moltopren strip

2 All-glass door panel

3 All-glass door hinge

4 Glazing seal

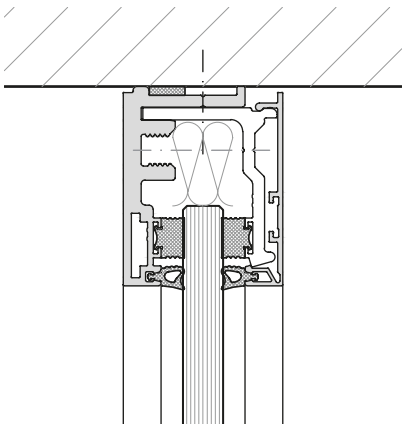
5 Nut

6 Clamp support

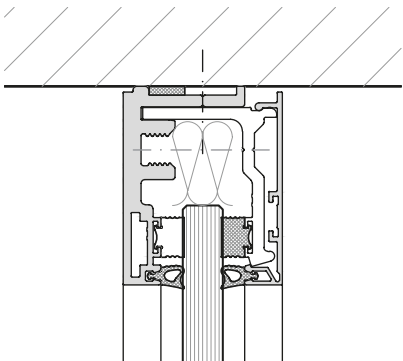
7 Glass support

8 Clamping bracket

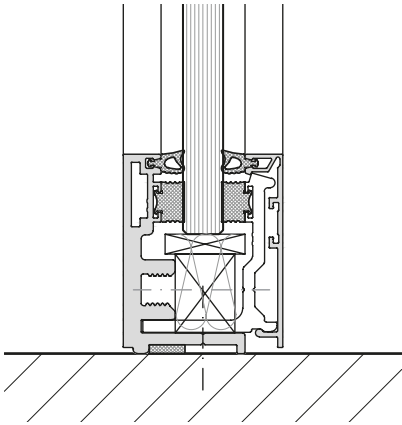
9 Aluminium frame



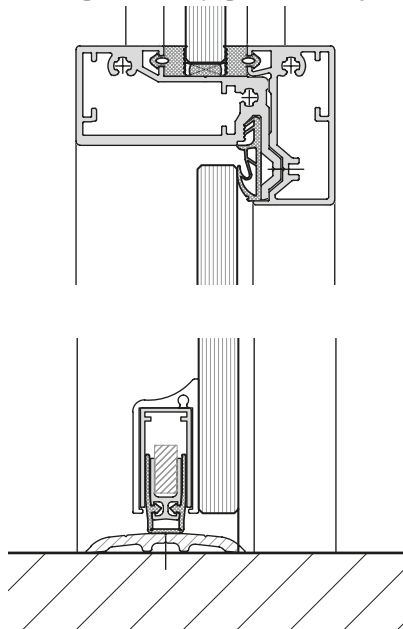
Glass wall ceiling connection



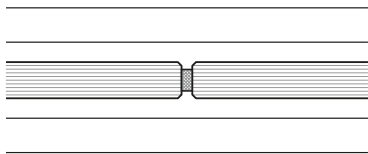
Sliding door fully-glazed ceiling connection



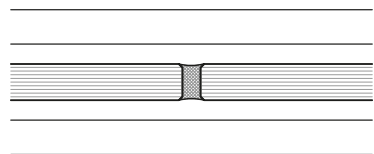
Glass wall floor connection



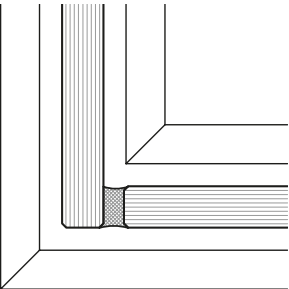
Sliding door fully-glazed floor connection



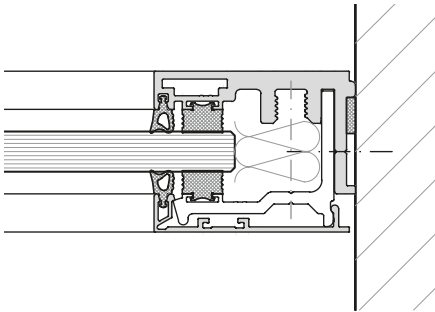
Glass wall modular grid joint



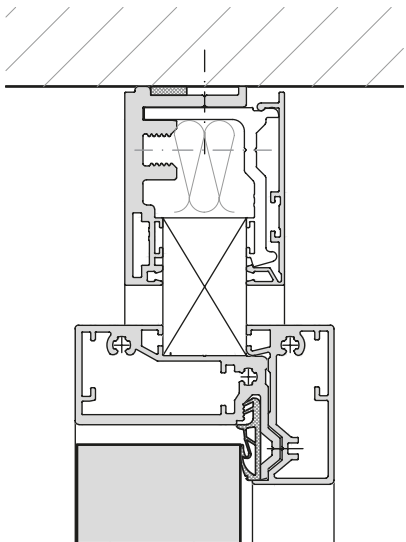
Glass wall modular grid joint



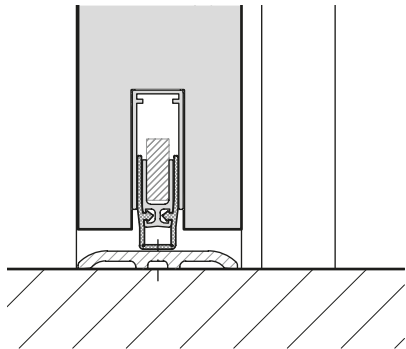
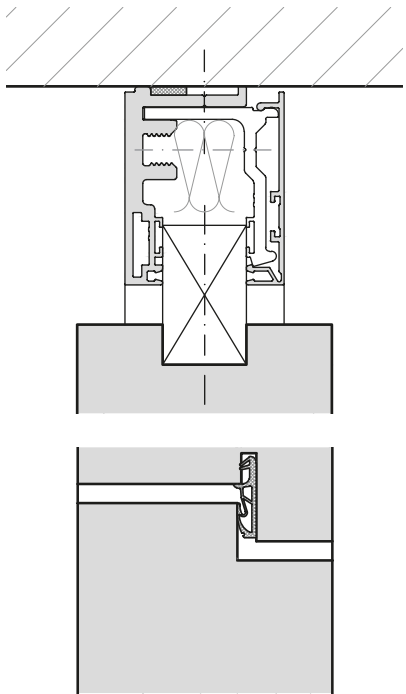
Glass wall 90° corner



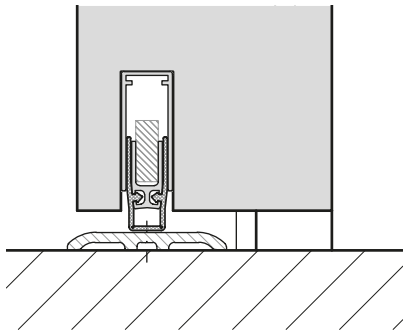
Glass wall abutment connection



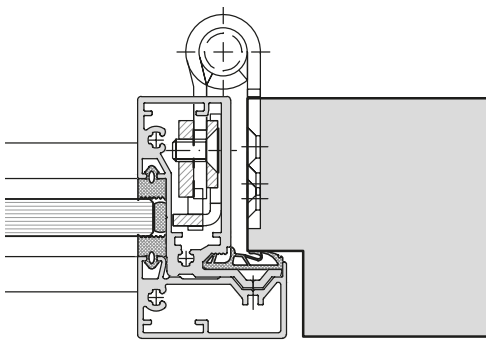
Solid wall ceiling connection



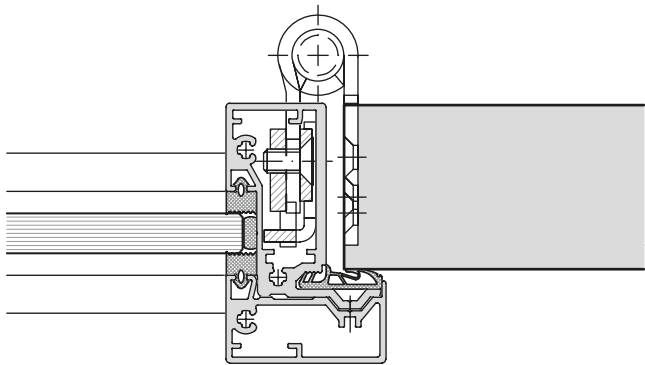
Solid wall floor connection



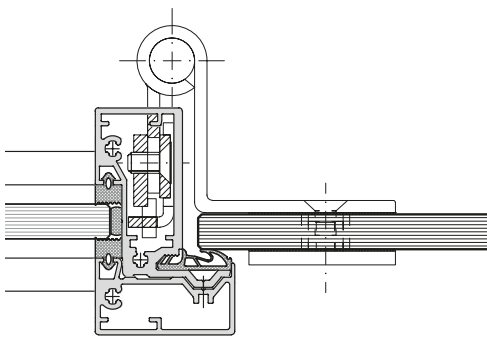
Solid wall 64 mm block frame



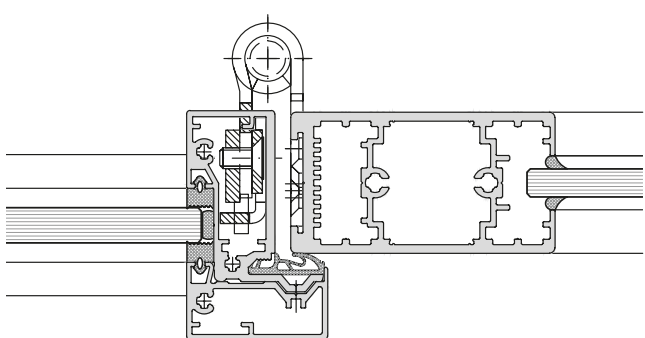
Solid wall 64 mm



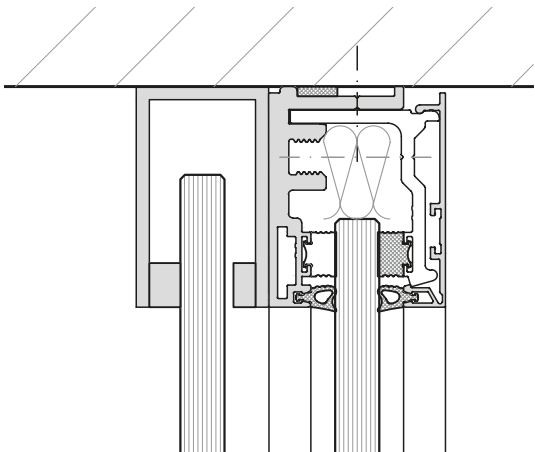
Solid wall 41 mm



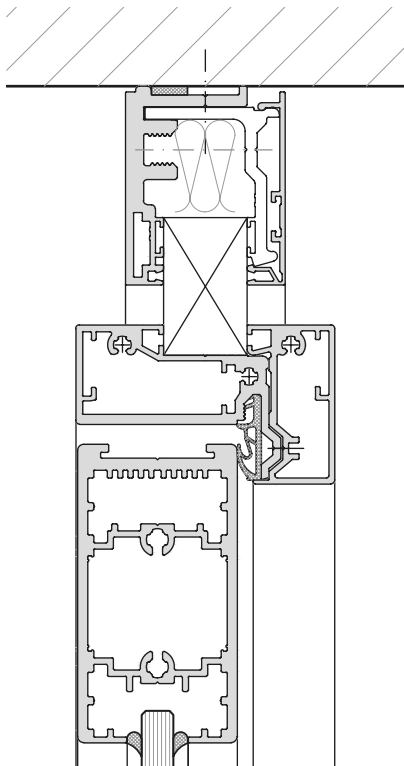
Door element fully-glazed



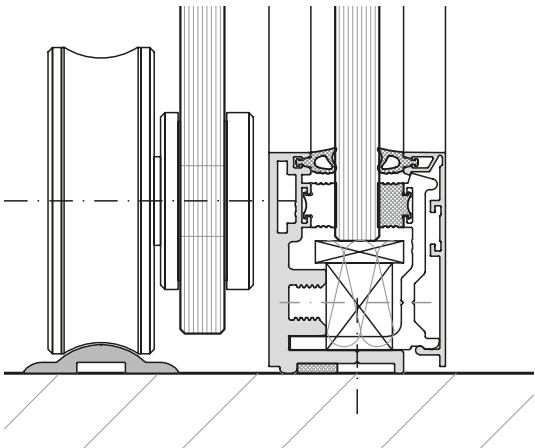
Door element aluminium framed door



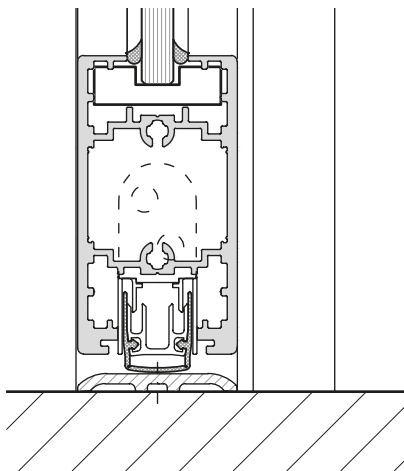
Sliding door fully-glazed ceiling connection



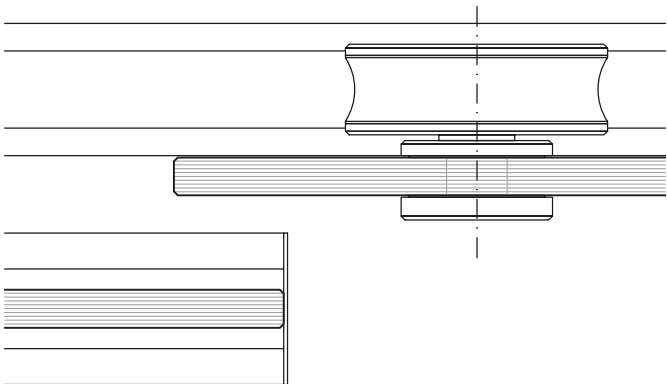
Aluminium framed door 40 mm ceiling connection



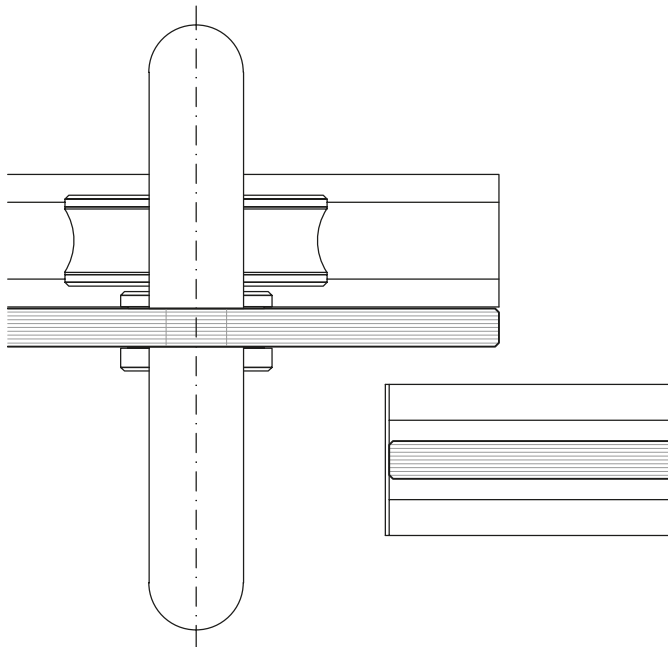
Sliding door floor connection

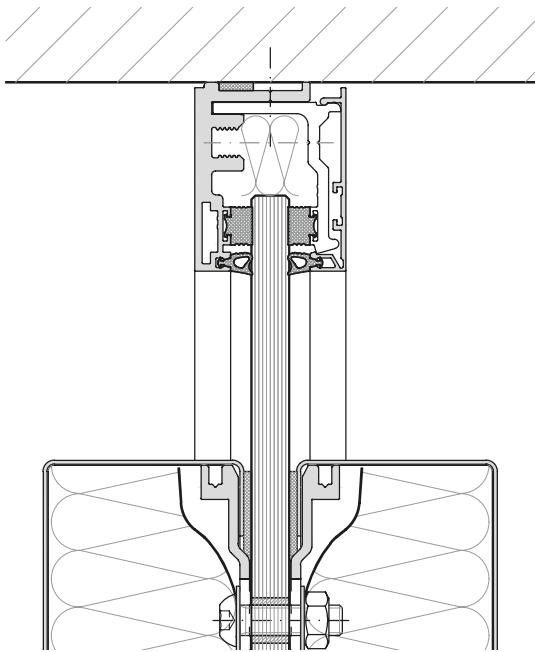


Aluminium framed door 40 mm floor connection

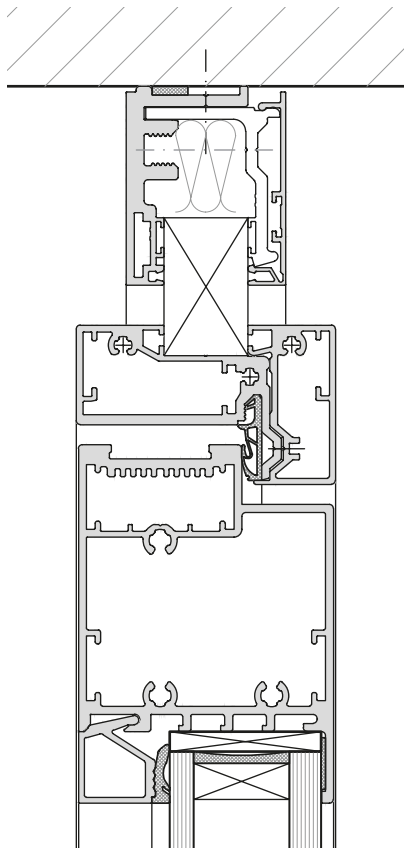


Sliding door fully-glazed

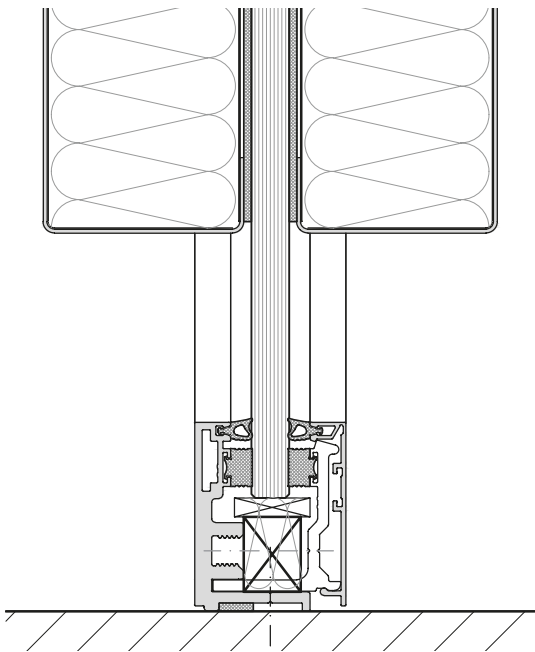




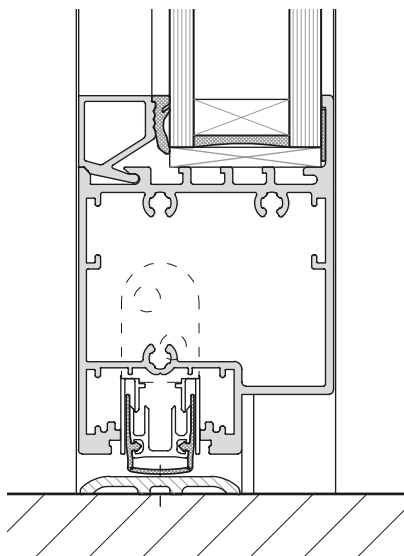
Absorber element ceiling connection



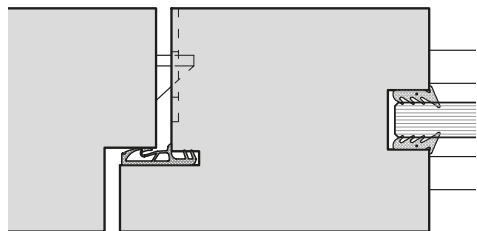
Aluminium framed door 64 mm ceiling connection



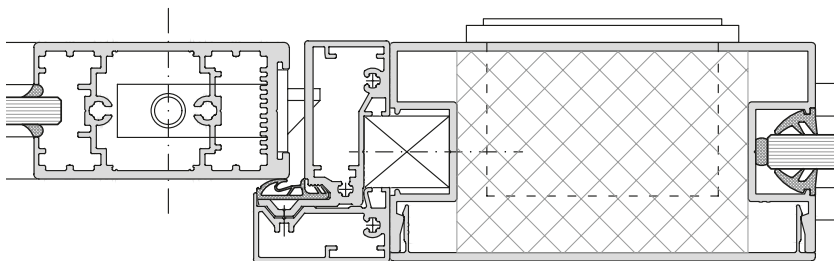
Absorber element floor connection



Aluminium framed door 64 mm floor connection



Door element Solid wall 64 mm



Door element aluminium framed door 64 mm

<b>Partion wall</b>	
<b>Design</b>	Variable single-glazed all-glass system without vertical posts for maximum transparency
<b>Wall thickness</b>	Standard design: 10, 12 mm toughened safety glass; 12 mm acoustic laminated glass; 16 mm sound-insulating laminated glass
<b>Grid</b>	Dimensions freely selectable, in accordance with static approval, module widths between 400 mm and 1600 mm
<b>Heights</b>	Build height freely selectable, in accordance with static approval for the relevant use, max. build height 4000 mm
<b>Deflection</b>	profile: +/- 10 mm
<b>Floor connection</b>	50 mm
<b>Ceiling connection</b>	50 mm
<b>Finishes</b>	<ul style="list-style-type: none"> <li>- Continuous glass front without visible frame</li> <li>- Aluminium profiles: anodised E6EV1, powder-coated based on RAL</li> <li>- Seals in light grey</li> </ul>
<b>Glazing</b>	10, 12 mm toughened safety glass; 12 mm acoustic laminated glass; 16 mm sound-insulating laminated glass
<b>Glass joints</b>	Silicon seals or adhesive strip seals
<b>Installation</b>	<ul style="list-style-type: none"> <li>- Vertical and horizontal wiring in the wall system</li> <li>- Switches, plug sockets and control elements can be integrated into solid walls / door side panels</li> </ul>
<b>Accessories</b>	
<b>Acoustic absorbers</b>	Highly absorbent and sound-insulating partition absorbers can be flush-fitted, either as metal absorbers, perforation as per the Strähle collection
<b>Climate control elements</b>	Strähle ÜS 60 air-flow elements for integration into door side panel or upper sections
<b>Door elements</b>	
<b>Door frames</b>	<ul style="list-style-type: none"> <li>- Aluminium system frames with high-grade 3D hinges to support a variety of door types</li> <li>- Wooden block frame for 64 mm portal door</li> <li>- Standard-heights: 2115mm / 2435 mm</li> </ul>
<b>Door leaves</b>	Solid doors: 41 and 64 mm Aluminium framed door: 40 and 64 mm Fully-glazed door: 10 mm toughed safety glass Wooden portal door: 64 mm in block frame design with 64 mm wooden door panel, single rebate
<b>Sliding doors</b>	<ul style="list-style-type: none"> <li>- Floor and ceiling-guided versions possible</li> <li>- ST 40 sound-insulating sliding door</li> </ul>
<b>Fittings</b>	Three-piece adjustable door hinges, stainless steel, door handles from collection
<b>Fire prevention</b>	Fire-rated version not possible

Wall element	Construction / Specification	Wall element Sound insulation in $R_{w,P}$
Fully-glazed	Toughened safty glass 10 mm	32 dB
	Toughened safty glass 12 mm	32 dB
	Acoustic laminated glass 12 mm*	36 dB
	Acoustic laminated glass 16 mm	40 dB
	Acoustic laminated glass 20 mm	41 dB **

Door element	Construction / Specification	Door element Sound insulation in $R_{w,P}$	2-leaved version
Solid door	Solid door leaf 41 mm	32 dB	
	Sound insulation door leaf 41 mm	38 dB	
	Solid door leaf 64 mm	38 dB	x
Fully-glazed door	Fully-glazed door 10 mm with drop seal	32 dB	
Aluminium framed door	Aluminium framed door 40 mm 8 mm toughend safety glass   8mm acoustic laminated glass   12 mm acoustic laminated glass	32, 34, 37 dB	x
	Aluminium framed door 64 mm - 38 mm double glazed	37 dB	x
Sliding door	Sound insulation sliding door	34 dB	

The tolerance for calculating the  $R_{wR}$  value according to DIN 4109 is -2 dB, and -5 dB in the case of door elements  
The deduction figure for door elements between 2.5 and 3.0 m in height is approx. -2 dB

\*Static certification only up to a height of 2970 mm.



Strähle Raum-Systeme GmbH  
[www.straehle.de](http://www.straehle.de)  
[info@straehle.de](mailto:info@straehle.de)

Gewerbestraße 6  
71332 Waiblingen  
T +49 7151 1714-0

Wurzelweg 5  
14822 Borkheide  
T +49 33845 66-0

Austria  
Industriestraße 9  
2353 Guntramsdorf  
T +43 2236 23232-0

Switzerland  
Dellenbodenweg 1  
4452 Itingen  
T +41 61 463 1332

UNITED KINGDOM PARTNER  
Savile Row Projects Ltd  
108-114 Golden Lane  
EC1Y 0TG London  
M +44 (0) 7813 652015