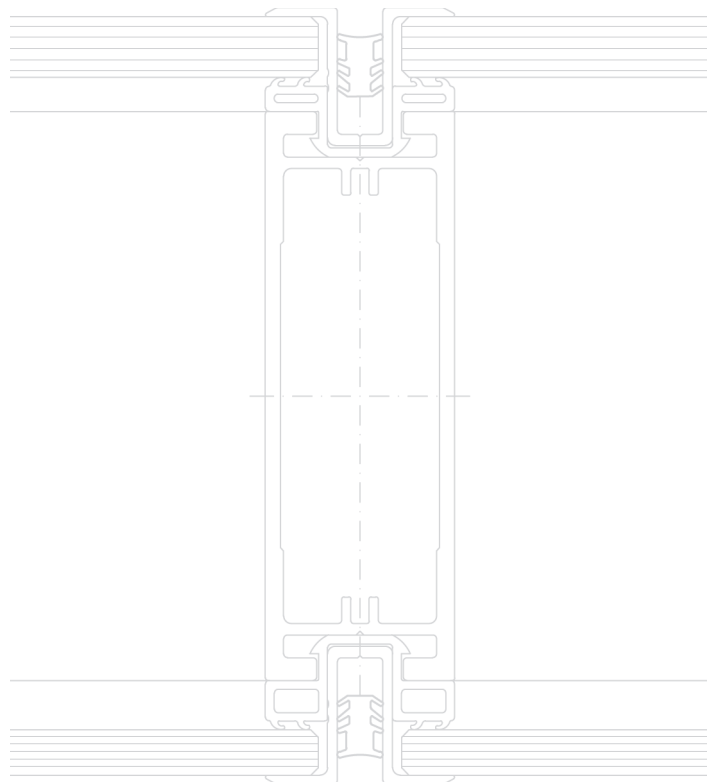


# Partition System MTS



# System MTS

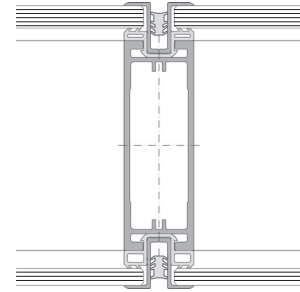
Aluminium post-and-beam structure  
100 mm wall thickness

The MTS partition wall consists of a slender post-and-beam structure in aluminium with a visible width of just 25 mm. Equally slender strips fix the glazing perfectly flat on the substructure. The remarkable feature of this pared down, modular partition wall system is the flush-fitting look of the glass. The system can also be combined with closed panels or toplight panels. You can choose between slimline single or double-rebate aluminium frames in combination with a variety of door leaves. This slender, pared down wall system owes its appeal to its modularity and its understated elegance.

The aluminium structure is distinguished by its minimal cross-sections. The transoms are fixed firmly to the vertical posts using a specially developed connector. The structure is level-adjustable and connections to ceilings, floors and walls are made to adjacent construction elements by means of recessed aluminium sections with dimensional tolerance. The slender but very rigid design allows ample grid dimensions and the system's modular structure makes it quick to assemble and alter.



Flush glazing



## Design

Post-and-beam structure

## Construction

Double-rebated 6-8 mm toughened safety glass /  
acoustic laminated glass

## Element types

Fully-glazed, clerestory, balustrade, solid wall

## Wall thickness

100 mm

## Visible weight

25 mm

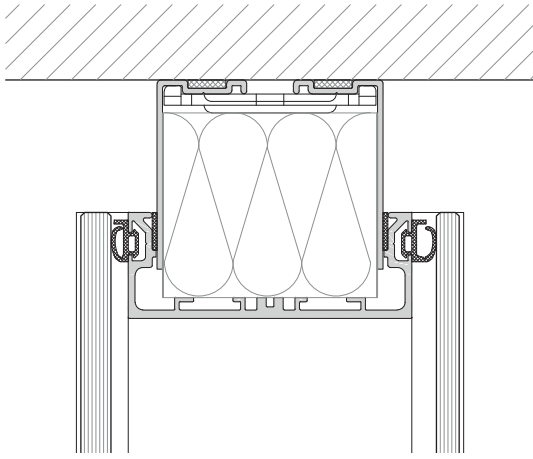
## Sound insulation

bis  $R_{w,P}$  47 dB

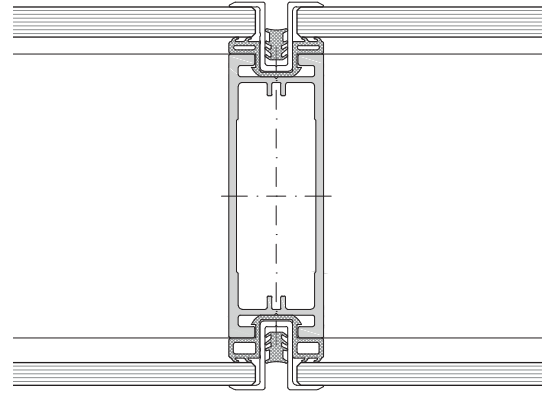
## Accessories

Acoustic absorber, blinds, climate control elements

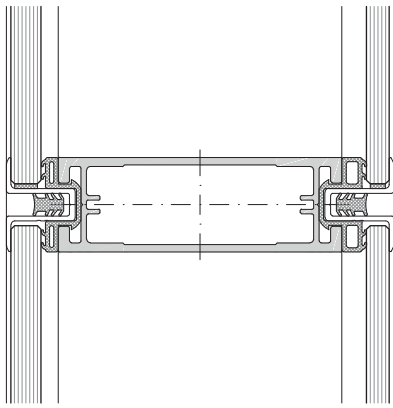




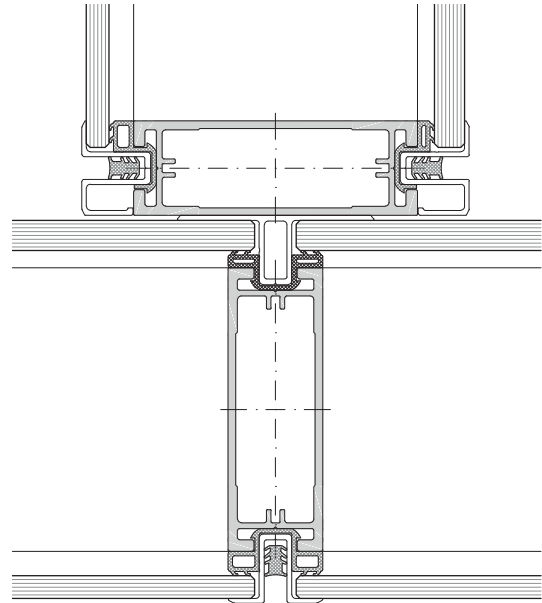
Glass element ceiling connection



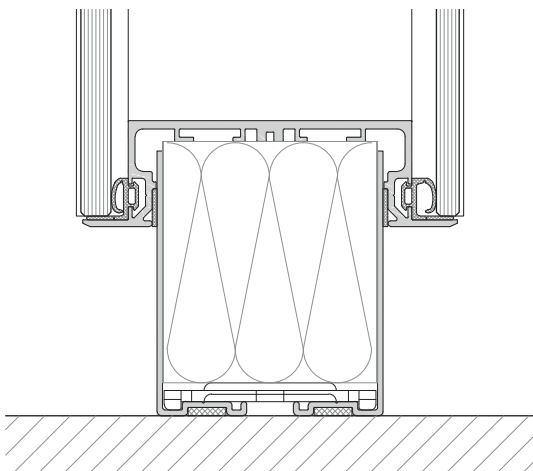
Glass element modular grid joint



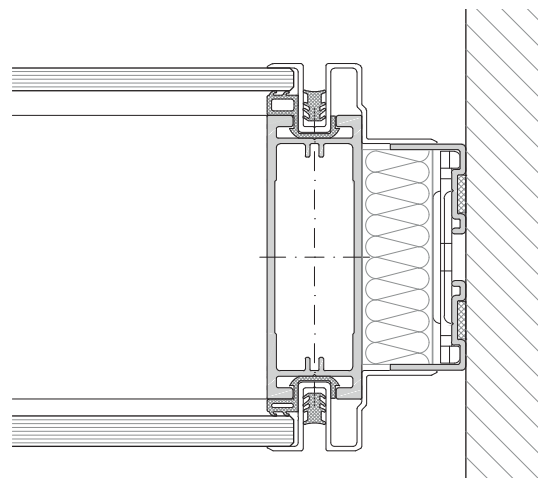
Glass element transverse joint



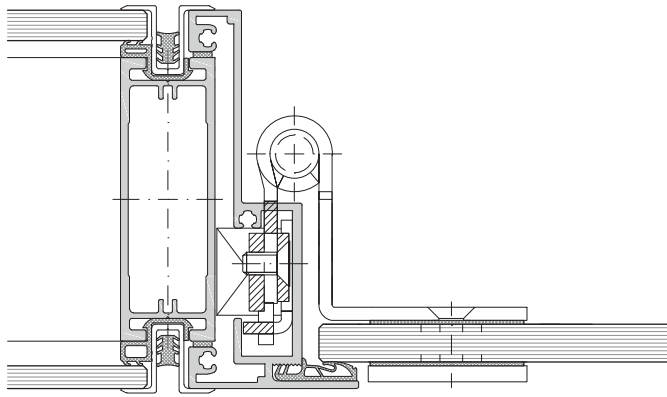
Glass element T-junction



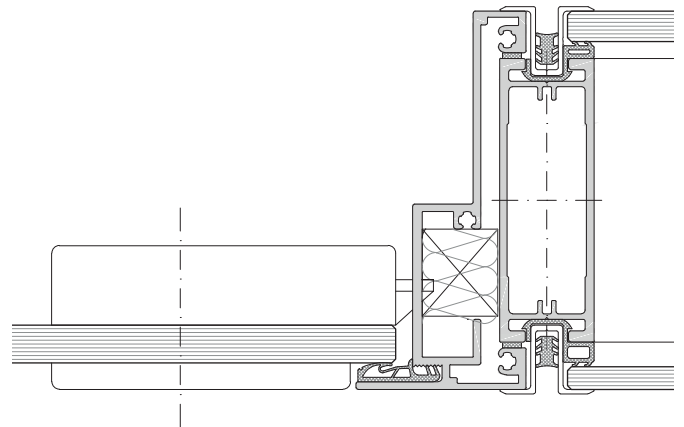
Glass element floor connection



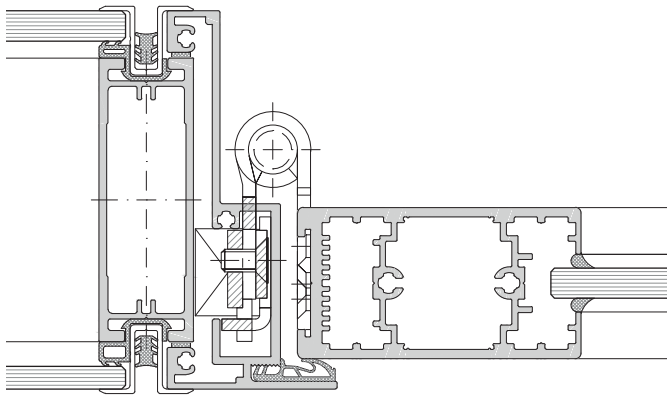
Glass element abutment connection



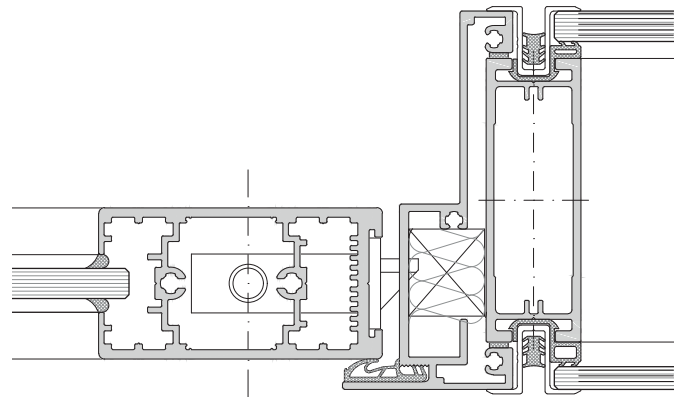
Fully glazed door hinge side



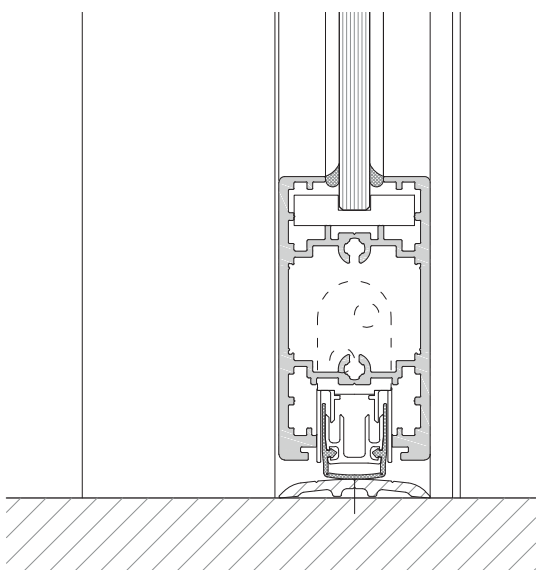
Fully glazed door lock side



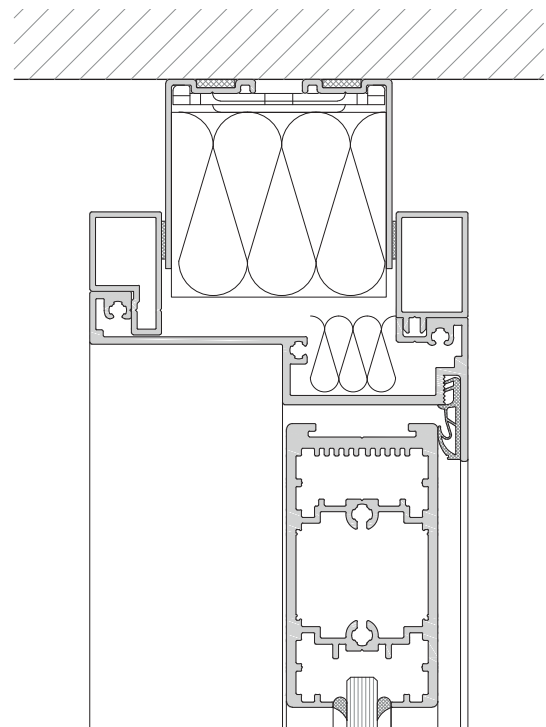
Aluminium framed door hinge side



Aluminium framed door lock side

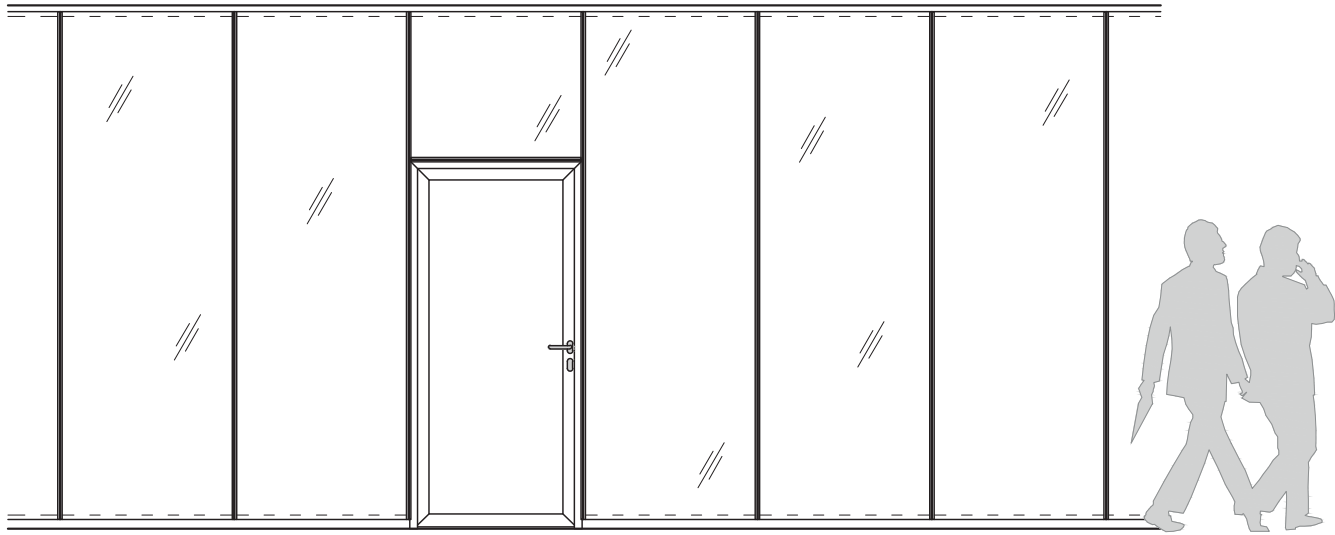


Aluminium framed door floor connection



Aluminium framed door ceiling connection

## Corridor wall



## Sound insulation

Element types	Construction / Description	Sound insulation $R_{w,p}$ in dB
<b>Glass elements, double frame</b>	Toughened safety glass 6 mm / 8 mm	43 dB
	Toughened safety glass 6 mm / acoustic laminated glass 8 mm	45 dB
	Toughened safety glass 8 mm / acoustic laminated glass 8 mm	46 dB
	Acoustic laminated glass 8 mm / acoustic laminated glass 8 mm	49 dB
<b>Door elements</b>	VT 40 Solid door 40 mm	32 dB, 37 dB
	VT 64 Solid door 64 mm	38 dB, 42 dB (Double rebated frame)
	AR 40 Aluminium frame door 40 mm	32 dB, 34dB, 37 dB
	AR 64 Aluminium frame door 64 mm	37 dB
	AR 100 Aluminium frame door 100 mm	42 dB (Double rebated frame)
	GG 10 All-glass door	32 dB

Partion wall	Construction / Description
<b>Wall thickness</b>	100 mm
<b>Widhts</b>	Up to 1600 mm approx. depending on height
<b>Heights</b>	Up to 3500 mm
<b>Substructure</b>	self-supporting, level-adjustable aluminium post-and-beam structure with just 25 mm visible widht
<b>Connection sections</b>	Two-part aluminium sections
<b>Deflection</b>	Floor +-5 mm, ceiling: +- 8 mm
<b>Floor connection</b>	Recessed by 20 mm, standard height 50mm, 80 mm, special height possible
<b>Ceiling connection</b>	Recessed by 20 mm, standard height 50mm, 80 mm, special height possible
<b>Finishes</b>	Standard: E6EV1 anodized aluminium Choose between powder-coating and spezial anodized colour finishes
<b>Glazing</b>	Glazing on one or both sides using thougend syfety glass or acoustic laminated glass
<b>Door elements</b>	
<b>Single-rebated aluminium frame:</b>	Frame for: VT40 40 mm solid door, GG10 10 mm all-glass door AR40 40 mm aluminium frame door
<b>Double-rebated aluminium frame:</b>	Frame for VT64 64 mm solid door, AR64 64 mm aluminium frame door AR100 100 mm aluminium frame door
<b>Sliding door</b>	ST10-D 10 mm all-glass sliding door, ceiling-mounted ST10-D 10 mm all-glass sliding door, floor-mounted
<b>Door hinges</b>	Professional-quality stainless steel 3D-ajdustable door hinges, 3 hinges required from door height of 2500 mm and above Door handle in stainless steel as per collection or to individual choice
<b>Door handles</b>	Door handles in stainless steel as per collection or by project according to client's choice
<b>Fire prevention</b>	No fire prevention possible
<b>Accessories</b>	
<b>Blinds</b>	Electric blinds can be supplied inside glass elements. Widths 300-1350 mm
<b>Acoustic absorbers</b>	Flush-fit, high-performance wall absorbers available: metal or wood perforated, fabric covered

Strähle Raum-Systeme GmbH  
[www.straehle.de](http://www.straehle.de)  
[info@straehle.de](mailto:info@straehle.de)

Gewerbestraße 6  
71332 Waiblingen  
T +49 7151 1714-0  
F +49 7151 1714-320

Wurzelweg 5  
14822 Borkheide  
T +49 33845 66-0  
F +49 33845 66-199

Austria  
Industriestraße 9  
2353 Guntramsdorf  
T +43 2236 23232-0

Schweiz  
Dellenbodenweg 1  
4452 Itingen  
T +41 61 463 1332  
F +41 61 463 1333

UNITED KINGDOM PARTNER  
Savile Row Projects Ltd  
108-114 Golden Lane  
EC1Y 0TG London  
M +44 (0) 7813 652015